



*Welcome*  
TO JABIRU



*Front page photography courtesy:  
Peter Keepence Photography and others are contributed*

JABIRU RESIDENTS' HANDBOOK

2025

*Welcome*  
**TO JABIRU**  
EDITION 20

**WEST ARNHEM**



REGIONAL COUNCIL

This handbook was made possible by West Arnhem Regional Council and the dedicated members, businesses, community groups and organisations of the Jabiru community.

Thank you to those who have contributed photographs which appear throughout the booklet over the years.

# Contents

Jabiru town map	7
-----------------	---

---

## Getting settled in Jabiru 9

1.1 Post Office	9
1.2 Banking	9
1.3 Telephone and Internet	9
1.4 Power	9
1.5 Television and Radio Transmission	10
1.6 Drivers Licence and MVR	10
1.7 Electoral Roll	11
1.8 Rubbish Removal	11
1.9 Insurance	11

---

## Climate 12

2.1 The Six Seasons of Kakadu	12
2.2 The Three Seasons of the Top End	12

---

## Emergency Services 14

3.1 Emergency Services	14
3.2 Police Station	14
3.3 Health Centre	14
3.4 Fire Station	14
3.5 Disasters	15

---

## Safety Information 16

4.1 Fire Extinguishers	16
4.2 Smoke Detectors	16
4.3 Household Pools & Spas	17
4.4 Driving	17
4.5 Crocodiles	18
4.6 Storms	19
4.7 Snakes	19
4.8 Boating and fishing	19
4.9 Cyclones	19
4.10 Heat Stress	19

---

## Health 20

5.1 Health Centre	20
5.2 Health Store	20
5.3 Red Lily Health Board	21
5.4 Water	21
5.5 Pest Control	22
5.6 Dentist	22
5.7 Mosquitoes	22
5.8 Melioidosis	22

---

## Restrictions 23

6.1 Alcohol	23
6.2 Permits and Aboriginal Land	24
6.3 Road Conditions and Access	25
6.4 Animals	25
6.5 Plants	25
6.6 Fishing and Boating	26
6.7 Bats	27

---

## Education 29

7.1 Jabiru Area School	29
------------------------	----

---

## Churches 31

8.1 Church	31
8.2 Donations	31

---

## Shopping 32

9.1 Supermarket	32
9.2 Jabiru Post Office	32
9.3 Mercure Kakadu Crocodile Hotel	33
9.4 Marrawuddi Arts & Culture	33
9.5 Airport Gift Shop	33
9.6 Jabiru Service Station	33

---

## Recreation 34

10.1 Pool and Gymnasium	34
10.2 Sporting Ovals	34
10.3 Golf	34
10.4 Fishing Club	35
10.5 Lake Jabiru Park	35
10.6 Clubs, Sports and Associations	35
10.7 Community Hall	35
10.8 Playground Equipment	36
10.9 Bushwalking	36
10.10 Camping	36
10.11 Soccer	37
10.12 Jabiru Creative Group	37
10.13 Kakadu Army Cadets	37
10.14 AFL	37
10.15 Jabiru Pistol Club	38
10.16 Kakadu Deadly Runners	38
10.17 Jabiru Underwater Hockey	38
10.18 Jabiru Junior Bushratz	38

---

## **Children's Services and Activities** **39**

11.1	Childcare	38
11.2	Play Group	38
11.3	Babysitters	38

---

## **Accommodation and Meals** **40**

12.1	Jabiru IGA Supermarket	40
12.2	Mercure Kakadu Crocodile Hotel	40
12.3	Kakadu Lodge and Caravan Park	40
12.4	Cooinda Lodge Kakadu	41
12.5	Anbinik Kakadu Resort	41
12.6	Jabiru Golf Club	42

---

## **Services** **43**

13.1	West Arnhem Regional Council	43
13.2	Justice of the Peace	43
13.3	Community Care Services	43
13.4	Centrelink Agents	44
13.5	Aboriginal Associations	44
13.6	Jabiru Property Services	45
13.7	Public Library	45
13.8	Northern Land Council	46
13.9	CDP	46
13.10	CatholicCare NT	46
13.11	Cleaning	46
13.12	Veterinary	46
13.13	Department of Trade, Business & Asian Relations	46

---

## **Mechanical Repairs and Fuel** **47**

14.1	Jabiru Service Station	47
14.2	Opal Fuel	47

---

## **Freight Services, Transport and Charters** **48**

15.1	Northline QAL	48
15.2	TOLL	48
15.3	AJ Couriers	48
15.4	Bus Service	48

15.5	North Australian Helicopters	49
15.6	Katherine Aviation	49
15.7	Air Services	49
15.8	Kakadu Air	49
15.9	Gunbalanya Air Charters	49
15.10	Nautilus Aviation	49

---

## **Tourist Information** **50**

16.1	Kakadu National Park	50
16.2	Bowali Visitor Centre	50
16.3	Scenic Flights	51
16.4	Kakadu Tours and Travel	51
16.5	Mercure Kakadu Crocodile Hotel	51
16.6	Warradjan Cultural Centre	52
16.7	Cooinda Lodge Kakadu	52

---

## **Volunteering** **53**

---

## **Festivals and Events** **54**

---

## **Government** **55**

19.1	West Arnhem Regional Council	55
------	------------------------------	----

---

## **Closure and Rehabilitation of a former asset** **58**

20.1	About Energy Resources of Australia	58
------	-------------------------------------	----

---

## **Masterplan** **59**

21.1	Jabiru Masterplan	59
------	-------------------	----

---

## **Business Directory & Language Info**

Jabiru business directory	60
Local Language information	62

---

## **Cyclones** **64**

Cyclone preparedness & safety procedures	64
Emergency contact list	66

# Welcome to Jabiru

In welcoming new residents to Jabiru it is important to acknowledge the Traditional Owners of this land, the Mirarr people. We sincerely hope that residents of Jabiru who do not have a traditional connection with this area develop an understanding of, and respect for, the cultural and natural heritage, which envelops our unique town.

In 2021, after 40-years of dispossession, the land was handed back to the Mirarr Traditional Owners. As the Township Entity, Gundjeihmi Aboriginal Corporation Jabiru Town (GACJT) represents the Mirarr Traditional Owners for all issues related to Jabiru. GACJT administers the land tenure over Jabiru in accordance with the Township Lease and has a formal role under the Jabiru Town Plan to ensure compliance with the Jabiru Masterplan. The Jabiru Masterplan provides the broad Vision that the Mirarr Traditional Owners have committed to for the future of the town. The adoption of the Jabiru Masterplan has provided crucial planning certainty for government and private industry and is the keystone document for all planning and development. Jabiru is a small but diverse community, privileged by its location in a World Heritage listed area. The benefits of living in such an environment place important responsibilities on residents and visitors.

## FOREWORD

Welcome to Jabiru! We hope that you will find this guide useful in making the transition to a new location a little easier. Jabiru is situated on a 13 square kilometre lease within a World Heritage listed area, Kakadu National Park, and is located approximately 250km south-east of Darwin via the Arnhem Highway.

You will certainly find Jabiru and the surrounding area unique in many ways.

The town is unique in that it is located within Kakadu National Park, is surrounded by, and located on, Aboriginal Land in a region internationally recognised for its environmental and cultural values. Living in a World Heritage listed area places some unique obligations upon Jabiru residents in addition to approvals required through GACJT. As a consequence, the Kakadu National Park Management Plan outlines environmental, social and economic controls. These controls cover development, plants and animals,

The information in this book is designed to assist new residents in Jabiru to gain an understanding of their responsibilities and to encourage them to take advantage of the attractions Jabiru and its surrounds have to offer.

The town offers a range of services for children and youth. Services include the Jabiru Childcare Centre, Jabiru Playgroup and of course Jabiru Area School, all of which provide opportunities for children to develop skills, education and socialise. A range of facilities such as the skate park, sporting ovals, olympic-sized swimming pool and gymnasium are available to enjoy.

There are a vast variety of sport and recreation choices for residents in Jabiru. The town enjoys well-maintained sporting facilities and dedicated residents and volunteers are always busy organising events, festivals and competitions. There is also Kakadu National Park and all the attractions it has to offer including fishing, camping, sightseeing, bushwalking, bird-watching and insight into a rich Indigenous culture.

The *West Arnhem Wire* is a fortnightly newspaper published by West Arnhem Regional Council. It is available for free from Jabiru Post Office, Jabiru Foodland, and from Regional Council offices and supermarkets in all major West Arnhem communities.

disturbance of soil and vegetation, tree preservation and disposal of waste.

Certain activities that would be considered normal in another town may be prohibited or restricted in Jabiru. We ask that you respect these regulations and always act responsibly.

During your time in Jabiru your involvement in community life will assist in enriching the lifestyle we already enjoy. We sincerely hope that you will enjoy your time as a resident of Jabiru.

## DISCLAIMER

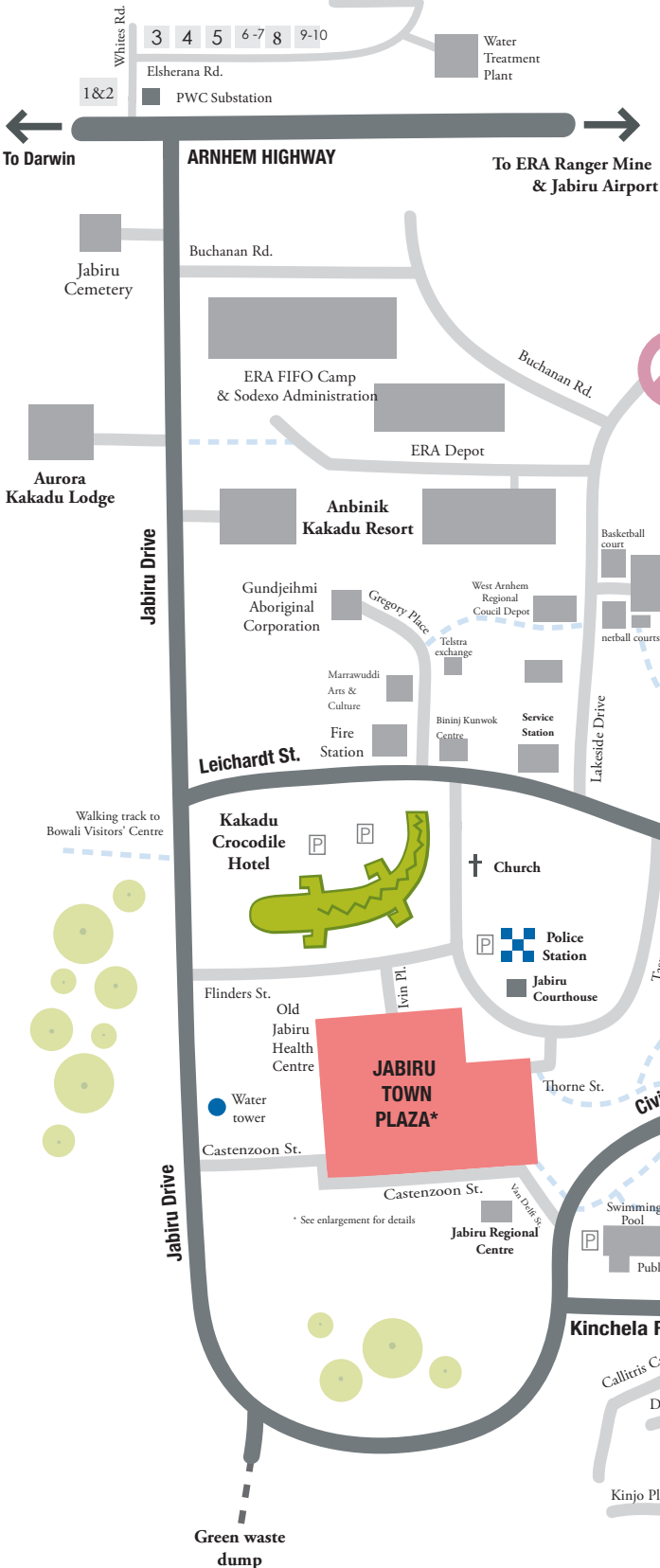
This handbook has been compiled as a service to new and existing residents of Jabiru. Every effort has been made to ensure the accuracy of this publication, however the publishers accept no responsibility for errors or omissions contained therein. To provide corrections or updates to the handbook, please email [wire@westarnhem.nt.gov.au](mailto:wire@westarnhem.nt.gov.au).

# Jabiru TOWN MAP

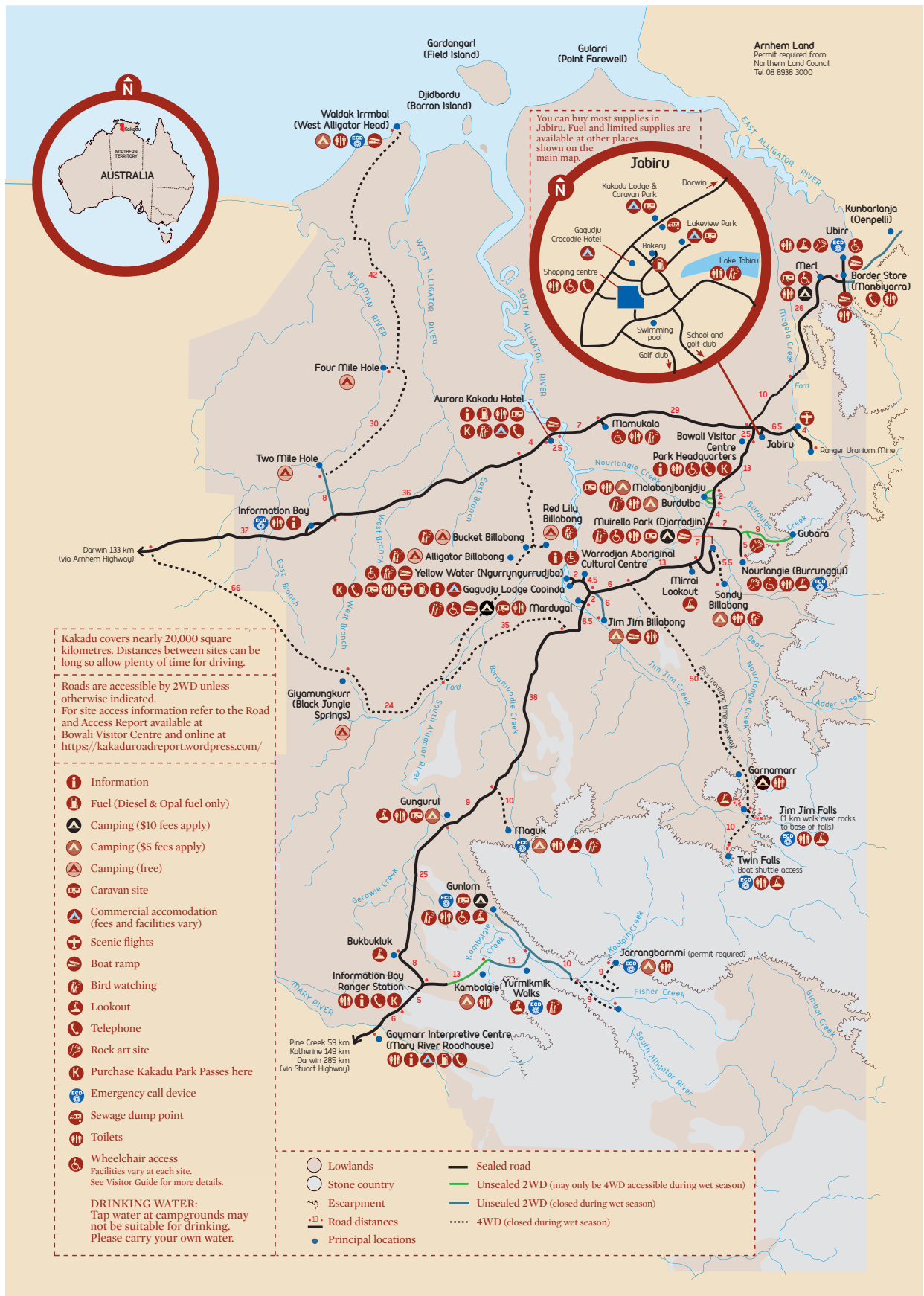
PLEASE NOTE: MAP IS NOT TO SCALE

## INDUSTRIAL AREA

1. Blueridge Engineering
  2. Djabulukgu Assoc.
  3. Telstra Depot
  4. Warnbi Aboriginal Corp.
  5. Kakadu Contracting
  6. NT Emergency Services
  7. JPS Storage Facility
  8. Bus Depot
  9. Concrete Plant
  10. NTEX
- Rubbish Tip  
Hybrid Renewable Power Station  
Water Treatment Plant



# Kakadu National Park map



MAP COURTESY OF KAKADU NATIONAL PARK



# Getting settled IN JABIRU



*Jabiru post office*

## POST OFFICE

**P:** (08) 8979 9417

## OPENING HOURS

Mon - Fri	10.30am - 5.00pm
Sat	CLOSED
Sun	CLOSED
Public holidays	CLOSED

## TELSTRA

**P:** 132 200

**W:** [www.telstra.com](http://www.telstra.com)

## POWER & WATER

**P:** 1800 245 092

**W:** [www.powerwater.com.au](http://www.powerwater.com.au)

## 1.1 POST OFFICE

There is no home delivery postal service in Jabiru. A post office box can be rented from the Post Office in the Jabiru Town Plaza. All post office services are available including passport applications.

## 1.2 BANKING

There is currently no full-service bank operating in Jabiru, following the closure of Westpac in 2021.

The Post Office currently offers banking services for the community including:

- Bank Deposits
- Money Withdrawals

You must present your current banking card for any of these transactions.

ATM's can be found at the following locations:

- Jabiru Golf Club
- Kakadu Supermarket
- Jabiru Service Station
- Kakadu Crocodile Hotel

## 1.3 TELEPHONE AND INTERNET

The cost of telephone and internet connection is the responsibility of tenants. For hook-up information call Telstra residential. For NBN internet/broadband and mobile phones check the phone book or Telstra website for the various options. Public WiFi is available at the Jabiru Library.

## 1.4 POWER

A hybrid power station has been constructed to deliver Jabiru's power. Power & Water will work with the Jabiru Hybrid Renewable Power Station owner/operator EDL to maintain the service.

For information relating to connections/ disconnections and payments, please contact Power & Water.

## RADIO STATIONS

ABC Darwin 747 AM
ABC Radio 107.7 FM
ABC News 102.1 FM
JJJ Youth Radio 105.3FM
TEABBA Jabiru Radio 98.9FM

## TV STATIONS

ONE	Channel 1
ABC1	Channel 2
SBSOne	Channel 3
Southern Cross	Channel 7
Nine	Channel 9
Ten	Channel 10
11	Channel 11
ABC2 & 4Kids	Channel 22
ABC3	Channel 23
ABC News 24	Channel 24
SBSHD	Channel 30
SBS2	Channel 32
NITV	Channel 34
7MATE	Channel 70
7TWO	Channel 72
GEM	Channel 90
Extra	Channel 94
Extra2	Channel 95
GO	Channel 99

### MOTOR VEHICLE REGISTRY

P: 1300 654 628 (Darwin)

### DRIVING TESTS AND VEHICLE INSPECTIONS

P: (08) 8999 3100 (Darwin)

## 1.5 TELEVISION AND RADIO TRANSMISSION

Jabiru receives transmission from the radio and digital free-to-air television stations listed (left). Television aerials, poles and brackets are generally your responsibility. Other paid television services are the responsibility of the tenant.

## 1.6 DRIVERS LICENCE AND MOTOR VEHICLE REGISTRATIONS (MVR)

The Motor Vehicle Registry (MVR) makes periodical visits to the Jabiru Police Station located on Tasman Crescent opposite the Jabiru Town Plaza. Face-to-face MVR services are available. Please check the MVR website for their upcoming visits.

Australia Post retail outlets provide some MVR services including driver licence and car registration renewals where you have received a renewal notice with a barcode. Electronic transactions through MVR Quickpay online or the NT Rego App through your smartphone or tablet and by telephone on 1300 654 628. Visiting MVR Licence Testing Officers and Transport Inspectors attend Jabiru regularly for practical driving tests or vehicle compliance inspections. To make an appointment for a driving test or compliance check, please call 8999 3100 Monday to Friday between 8.00am and 3.00pm. Email [mvr@nt.gov.au](mailto:mvr@nt.gov.au) or visit Jabiru Police Station on Thursday between 8.00am and 3.00pm.

If you hold a licence from another state or territory and you are a resident of the NT, your licence is deemed invalid. To transfer your Australian issued Driver Licence to the NT, it must be current (or may be expired up to 5 years - a fee applies) at the time of transfer. To ensure that you remain licensed to drive, you will need to transfer your licence over to the NT within 3 months.

A motor vehicle registered in another state or jurisdiction may be deemed to be not registered, regardless of whether or not it has current registration in another state or jurisdiction, if:

1. You, as the owner are a resident of the NT, and the vehicle has been in the NT continuously for 28 days from the date of the vehicle arriving in the NT.
2. You are a resident of the NT, and you purchase an interstate registered vehicle, which has been in the NT continuously for 28 days.
3. You are an NT resident and you drive a vehicle-registered interstate that has been in the NT for a continuous period of three (3) months (so the vehicle is no longer classed as a 'visiting motor vehicle').

## 1.7 ELECTORAL ROLL

A change of address cannot be registered for electoral purposes until you have lived at your new address for one month. After one month's residency in Jabiru, you should complete an Electoral Claim form (available online from the Australian Electoral Commission from the Post Office and Council) to enable you to participate in Federal, Territory and Local Government elections. Enrolment forms are also available at the Council Office.

## 1.8 RUBBISH REMOVAL

All residents are allowed two wheelie bins which are owned by West Arnhem Regional Council. One has a red lid and the other has a yellow lid.

**The red lid bin is for domestic household rubbish which is collected on Tuesdays of each week and the bin with the yellow lid is for recyclable rubbish and is collected every Thursday. Bins are collected between the hours of 7:00am and 3:00pm (unless otherwise advised).**

The bins should be placed on the kerb before 7:00am on the day of collection. Residents must make their own arrangements to remove any rubbish other than household rubbish.

The Jabiru Landfill is open 24 hours a day and is located near the Jabiru Industrial Area. The facility is free for residential use; however charges apply for commercial dumping. There is a green waste facility located at the intersection of Jabiru Drive and Civic Drive.

Household residents may dispose of garbage or deposit recyclable materials in the marked areas at the waste disposal facility at any time. Bring your unwanted mobile phones and ink cartridges in to the West Arnhem Regional Council office in the Jabiru Town Plaza to be sent off to Clean Up Australia for recycling. For further recycling enquiries please contact West Arnhem Regional Council.

## 1.9 INSURANCE

As elsewhere throughout Australia, the tenant of a leased property is responsible for the insurance cover of his/her own personal possessions against fire, theft, burglary, storm and tempest, etc. It is therefore recommended that tenants take out contents insurance as well as a householder personal liability policy. Certain household policies will also protect you against loss of items for which you are directly responsible. It is best to check with your employer regarding the items that you are responsible for in your leased residence.

### WEST ARNHEM REGIONAL COUNCIL

**P:** (08) 8979 9444

### AUSTRALIAN ELECTORAL COMMISSION

**W:** <https://www.aec.gov.au/>

### RECYCLING

Envirobank visits Jabiru periodically. Call them directly to find out visit dates.

**P:** (08) 8931 0397

# Climate



## 2.1 THE SIX SEASONS OF KAKADU

Bininj/Mungguy (Aboriginal people of Kakadu) recognise six distinct seasons within Kakadu, as well as subtle variations that signpost the transition from one season to another (see Bininj seasonal calendar diagram below).



## 2.2 THE THREE SEASONS OF THE TOP END

Across the Top End of Australia, including Kakadu, people recognise the following seasons:

### THE DRY SEASON

The 'dry season' falls roughly between April and September. Temperatures range between 21°C and 33°C with low humidity and rain is rare. Most creeks stop flowing and floodplains quickly dry out. Visitor numbers are very high with many vehicles and caravans on the roads. All unsealed roads are usually open.

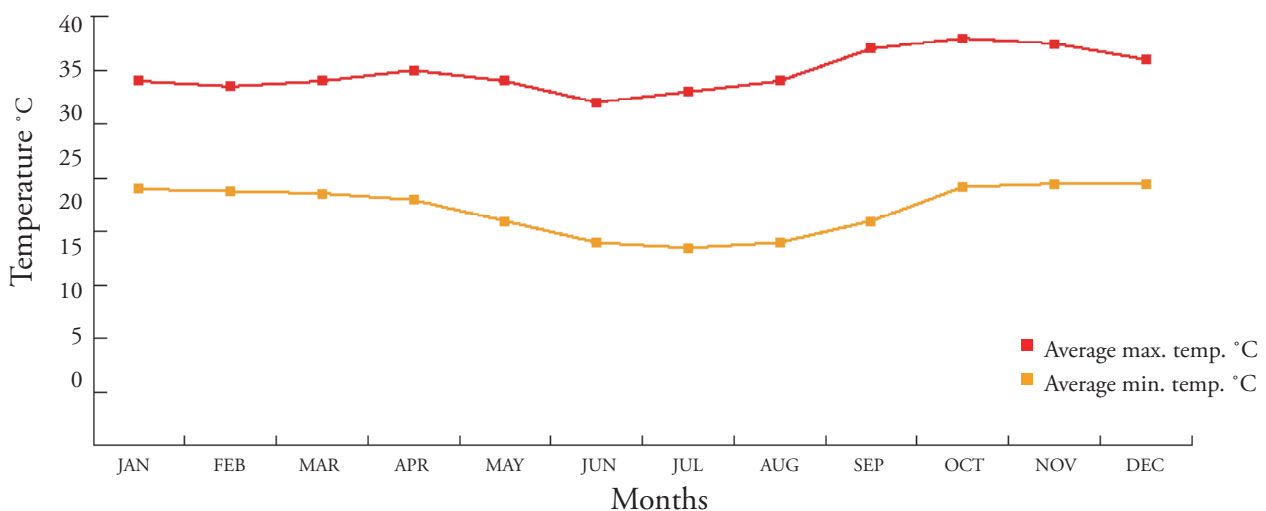
## THE BUILD-UP

The 'build-up' to the 'wet season' is usually during October and November. Temperatures range between 24°C and 40°C and humidity is very high. Storm clouds often build in the afternoons with dramatic thunder and lightning. Occasional showers entice new growth on the dry land. There is a significant decline in visitor numbers during this season and many unsealed roads may close. The 'build-up' can be a difficult time for new residents and it may take some time to acclimatise. Care should be taken to avoid dehydration and heat stress.

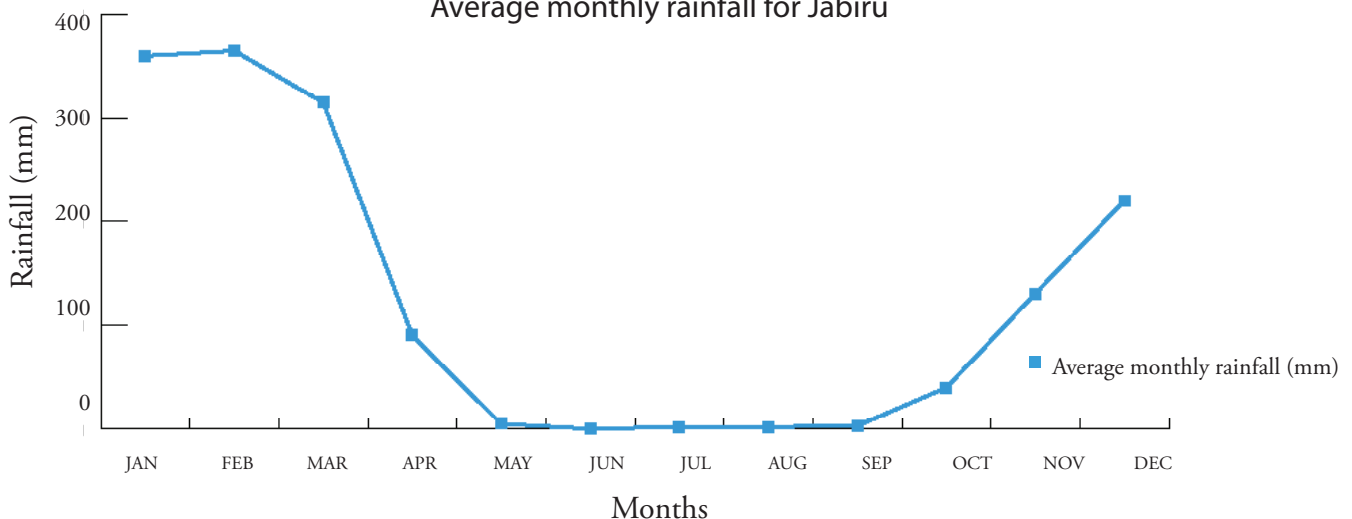
## THE WET SEASON

The 'wet season' usually falls between December and March. Temperatures range between 24°C and 36°C and humidity is high, with frequent heavy monsoon rains bringing welcome relief. This is the most dynamic time of the year. Creeks and rivers fill and overflow into the floodplains, bringing rapid new growth. With the increasing water levels, many areas within Kakadu become inaccessible, including most unsealed roads, creek crossings, and some sealed roads. Visitor numbers are low at this time of year. Residents are advised to contact Bowali Visitor Centre for up to date road conditions and access information.

Average maximum and minimum temperatures for Jabiru



Average monthly rainfall for Jabiru



DATA SOURCE: The Bureau, [www.bom.gov.au](http://www.bom.gov.au)

# Emergency Services

## INFORMATION

**DIAL**  
**000**  
in an emergency



**Emergency Call Centre will log the calls and refer to the correct response agency.**

**BEYOND BLUE**  
P: 1300 224 636

**POISONS INFO CENTRE**  
P: 131 126

**LIFE LINE**  
P: 131 114

**KIDS' HELPLINE**  
P: 1800 551 800

**SECURENT**  
W: [www.securent.gov.au](http://www.securent.gov.au)

**JABIRU POLICE STATION**  
P: (08) 8979 2122

**OPENING HOURS**  
Thu 8.00am - 4.00pm  
Other Days CLOSED

**JABIRU HEALTH CENTRE**  
After hours call out emergency service by nursing staff  
P: (08) 8979 9900

**JABIRU FIRE STATION**  
P: (08) 8995 5418  
24/7 General Enquiries: 0409 694 533

**OPENING HOURS**  
Mon - Fri 8.00am - 4.00pm  
Sat - Sun CLOSED

### 3.1 EMERGENCY SERVICES

SecureNT is the peak body for emergency management in the Northern Territory. The safety and lives of your family and your neighbours are of the utmost importance. You should:

- Place a list of essential services phone numbers in an easily accessible location
- Review with your family what to do in the case of fire or any other emergency
- Advise your employer of any fire damage, hazards or security issues
- Ensure you know how to use the fire extinguisher and fire blankets
- Check smoke detectors in your home regularly

### 3.2 POLICE STATION

The Jabiru Police Station is located on Tasman Crescent, across from the Jabiru Town Plaza. The front counter is open Thursdays only from 8.00am to 4.00pm.

In case of emergencies please call 000. For non-urgent matters, please call 131 444. Please call the Jabiru Police Station (8979 2122) if you need to speak to a member of the station directly. Your call will be routed through to the Police in Darwin and if the problem is deemed to warrant police intervention, an officer from Jabiru will be 'called out' to the emergency.

### 3.3 HEALTH CENTRE

After hours call out emergency services are available seven days a week, (08) 8979 9900. Nursing staff are available for after hours emergencies.

### 3.4 FIRE STATION

The Jabiru Fire Station is located on the corner of Gregory Place and Leichardt Street.

The Station provides an after-hours service and will be contacted via the 000 operator to any emergency requiring a Fire Service response, as well as a 24/7 general enquiries phone number on 0409 694 533.

The Fire Station is a community station and welcomes visitors.



## NORTHERN TERRITORY POLICE, FIRE AND EMERGENCY SERVICES, JABIRU POLICE STATION

### SIREN SYSTEMS

- Know your local siren warning system
- Jabiru has an early warning system in place
- Siren is tested every Monday at 6.00pm
- The siren will be used if communications have failed and a crew is required

**SecureNT provides up-to-date emergency alerts and warnings from the Bureau of Meteorology (BOM), NT Police, Fire and Emergency Services (NTPFES), Road Report NT, Power and Water and Bushfires NT.**

### CYCLONE THREAT

If Jabiru is under threat the siren will be activated at least two hours prior to the threat. The siren will sound for one minute then stop.

People will have to decide whether to remain in their homes, current location or evacuate.

Read the the Jabiru Local Emergency Plan: [pfes.nt.gov.au/emergency-service/emergency-management](https://pfes.nt.gov.au/emergency-service/emergency-management)

**For further information on cyclone preparedness and safety procedures please see page 63.**

# Safety information



## 4.1 FIRE EXTINGUISHERS

The accommodation provided by some employers comes equipped with fire extinguishers and fire blankets. Residents should be familiar with their usage. If your home is not equipped with either a fire extinguisher or a fire blanket, it is highly advisable to speak to your employer about having these installed.

## 4.2 SMOKE DETECTORS

All domestic accommodation in Jabiru should have smoke detectors installed and working correctly. If you don't have a smoke detector contact your employer or accommodation person for installation.

Ideally all your domestic accommodation smoke detectors should be tested weekly. This is done by simply using the end of a broom handle to reach the detector and press the button underneath the detector until it makes a loud piercing noise, remove the broom handle and the noise will stop, test completed. If it does not make a noise when tested, contact your employer or accommodation person immediately.

If your detector is beeping this will indicate the battery is flat and needs to be changed (small 9 volt battery).

It is recommended that all domestic smoke detectors follow the current NT legislation requirements. At the present time they are recommended to be of the Photo Electric type with either a 10 year lithium battery or hard wired with a backup battery.

Any enquires please call the Fire Station on (08) 8979 2502 to speak to the Officer-in-Charge.

Remember, April 1st is the nominated day to change all domestic accommodation smoke detector batteries.



### 4.3 HOUSEHOLD POOLS & SPAS

Children, especially those under 5 years of age, can drown in very shallow water. Between 1992 and 2022, 17 children aged 0-4 years drowned in portable pools in Australia. In 2020, NT Consumer Affairs published an article in 2020 stating that “on average one child dies from drowning in a portable pool every year, with others needing hospital treatment and some suffering permanent brain damage.”

Before you consider buying or setting up a portable pool/spa, ensure that you advise your landlord and check compliance under the Swimming Pool Safety Act 2004 (NT) (Act) applies. This Act mandates that all swimming pool, spa, inflatable or any recreational aquatic vessel that holds more than 30 cm of water must have compliant pool fencing or, for spa pools, a certified, solid, lockable spa lid.

### 4.4 DRIVING

Driving in the Top End can be challenging due to animals, changing road conditions, unsealed and often corrugated road surfaces with soft edges, smoke from fires, flash flooding and slippery roads caused by heavy rains. Try to avoid driving at night, look at depth markers and observe water flow before crossing flooded roads and always drive for the conditions. When stopping your vehicle along the roadway, use your hazard lights and pull up well off the road. Do not park on bridges or causeways.

Check with your employer regarding the rules when driving company vehicles. It is recommended that drivers do not use cruise control while driving on wet roads. Take a break at Corroboree Park or the Bark Hut when travelling between Jabiru and Darwin. Fuel is available at those break stops. Please note, Mary River Roadhouse is closed. Notify your family that you have arrived at your destination. Road conditions can change rapidly, particularly in the wet season. Always check road conditions before travelling by calling (free call) 1800 246 199, checking the road report online at <https://parksaustralia.gov.au/kakadu/access/> and <https://roadreport.nt.gov.au/>.



#### **BARK HUT (ANNABURROO)**

**P:** (08) 8978 8988

#### **CORROBOREE PARK**

**P:** (08) 8978 8920

#### **NT ROAD REPORT CONDITIONS**

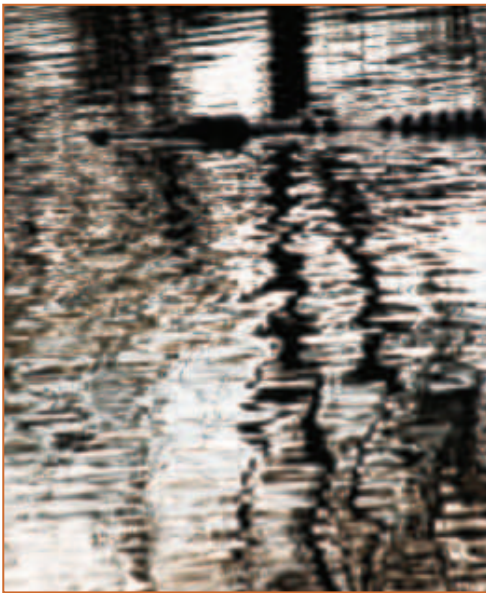
**P:** 1800 246 199

**W:** [www.roadreport.nt.gov.au](http://www.roadreport.nt.gov.au)

**F:** [facebook.com/roadreportnt](https://facebook.com/roadreportnt)

#### **KAKADU ROAD ACCESS REPORT**

**W:** <https://parksaustralia.gov.au/kakadu/access/>



#### DID YOU KNOW?

*“Large saltwater crocodiles can stay underwater for at least one hour because they can reduce their heart rate to 2-3 beats per minute. This means that crocodiles can wait underwater until they see prey, or if people are using the same spot regularly, the crocodile can wait underwater until someone approaches the water’s edge.”*

Check out <https://nt.gov.au/emergency/community-safety/crocodile-safety-be-crocwise> for more crocodilian facts.



Saltwater crocodile

## 4.5 CROCODILES

Kakadu is crocodile country. Crocodiles are an essential part of the Kakadu ecosystem. Estuarine (saltwater) crocodiles (*Crocodylus porosus*) inhabit all lowland waterways in Kakadu including freshwater and tidal rivers, floodplains, billabongs, coastlines and open seas. Estuarine crocodiles are apex predators. They can be extremely aggressive and have attacked and killed people in Kakadu. Freshwater crocodiles (*Crocodylus johnstonii*) inhabit freshwater rivers and billabongs. They are shy animals but can become aggressive if disturbed.

Crocodiles were hunted almost to extinction between the 1940s and 1960s. Following their protection in 1971 and increased habitat recovery, crocodile numbers have increased dramatically and continue to rise back to pre-contact population numbers. They continue to move further inland into all freshwater areas, re-establishing their presence in inland waterways and posing increasing risks to humans.

Due to the risks posed particularly by estuarine crocodiles, swimming is not permitted in most of Kakadu. Certain areas in Kakadu are designated ‘crocodile management zones’. Before opening these areas to visitors after the end of each wet season, park rangers take all possible measures to detect and remove crocodiles, then monitor these sites throughout the dry season. While these measures greatly reduce the risk of crocodile presence and attacks, crocodiles can move into these areas undetected at any time. Swimming is always at your own risk. The only swimming areas in Kakadu guaranteed to be crocodile-free are Jabiru public swimming pool and hotel/ caravan park swimming pools. Please report any crocodile interactions, near misses or potential crocodile risks by calling Bowali Visitor Centre, NT Parks and Wildlife Commission or NT Police as soon as possible. Please note, rangers have removed crocodiles from the Jabiru Lake.

For more information about crocodiles in Kakadu, see: <http://www.parksaustralia.gov.au/kakadu/pub/crocodile.pdf>

## 4.6 STORMS

Storms are frequent during the wet season. Take appropriate actions, such as unplugging electrical goods and supplying your own surge protection to protect electrical goods from damage. Landline telephones should not be used during electrical storms. PowerWater provide storm season preparation information. Check out [www.powerwater.com.au](http://www.powerwater.com.au) for information on cyclone and storm safety and Get Set for the Wet.

## 4.7 SNAKES

Kakadu is home to a wide variety of both venomous and non-venomous snakes. It is illegal to handle or interfere with any wildlife, including snakes, within Kakadu. If you find a snake in your home, open doors and it will most likely exit of its own accord. If this fails and you are concerned, contact Bowali Visitor Centre for further advice and assistance. If you find a snake in your yard, give it a wide berth - it is usually just passing through. To minimise the chance of snakes moving into your yard, keep it clear and mow the grass regularly.

## 4.8 BOATING AND FISHING

Fishing and boating can be dangerous in Kakadu. Please see the Fishing and Boating section on page 25 of this handbook for specific regulations and important safety information.

## 4.9 CYCLONES

For further information on cyclone preparedness and safety procedures please see page 63.

## 4.10 HEAT STRESS

Owing to the hot and humid climate, most people need to drink between three to five litres of water per day (or more if exploring Kakadu), not counting coffee, tea and alcohol. It is recommended that you limit your outdoor activities to the cooler parts of the day (mornings and late afternoons), drink plenty of water and wear sunscreen. A tip to remember is that if you are feeling thirsty, you have already become partially dehydrated. Early signs of dehydration are feeling thirsty, headache, dizziness and nausea. Some people may also become irritable. If you feel these symptoms yourself, or notice it in others, encourage a rest in a cool place and drink more water.



*Electrical storm*

### **BOWALI VISITOR CENTRE**

**P:** (08) 8938 1120

### **OPENING HOURS**

Mon - Sun 8.00am - 5.00pm

# Health

## JABIRU HEALTH CENTRE

**P:** (08) 8979 9900

### After hours

**P:** (08) 8979 9900

### OPENING HOURS

Mon 8.00am - 4.00pm

Tue 8.00pm - 4.00pm

Wed 8.00pm - 4.00pm

Thu 8.00pm - 4.00pm

Fri 8.00pm - 4.00pm

Sat - Sun Emergency call out only by  
Nursing staff

## RED LILY HEALTH BOARD

**Corporate Office: Darwin**

**P:** (08) 7925 0020

**E:** [admin@redlily.org.au](mailto:admin@redlily.org.au)

**W:** [www.redlily.org.au](http://www.redlily.org.au)

### OPENING HOURS

Mon - Fri 8.00am - 4.30pm

Sat - Sun CLOSED

## 5.1 HEALTH CENTRE

The Jabiru Health Centre is a remote community health centre situated in at 7 Tasman Crescent Jabiru. The Centre is managed by Red Lily Health Services and provides a range of services from Medicare Health assessments, acute emergency care and ambulance services to health promotion activities. Jabiru Health Centre operates under a nurse-led model, where the nursing staff play a key role in supporting GPs by conducting pre-screening and assisting with chronic disease reviews and care planning. Nurses and Aboriginal Health Practitioners (AHPs) provide advanced care following CARPA guidelines and collaborate closely with GPs to deliver comprehensive patient care. The GPs primarily see scheduled patients for health screening and planned care and those referred by the nurses and AHPs.

Services available also include:

- Health screening education and promotion
- Women and children's health
- X-ray
- Provision of services to outstations
- GP Services
- Aboriginal Health Practitioners
- Remote Area Nurses
- Medical certificates (during business hours, please note these cannot be backdated)

Visiting specialists also come to the Jabiru Health Centre intermittently. Referrals for specialist care can be made through the Health Centre clinical staff

If you are a new resident in the Jabiru area, you are encouraged to come in and have a medical record commenced. A detailed brochure is available at the front reception. For all enquiries please call the Jabiru Health Centre on 89799 900. Please note: After hours call-out emergency services are available seven days a week.

Doctors are not on duty on weekends or public holidays. Nursing staff are available for emergencies only during this time.

Please note nursing staff work a full day in addition to being on call, there is no dedicated night or evening shift.

## 5.2 HEALTH STORE

The health store is located in the Jabiru Health Centre for scripts and general merchandise. Prescription medication is not stocked on-site. Please provide prescriptions to staff by 1.30pm to ensure prescriptions are available for pickup on the next business day. EFTPOS is available.

### 5.3 RED LILY HEALTH BOARD

The Red Lily Health Board was formed in 2008 and incorporated in 2011, to empower Aboriginal people of the West Arnhem communities and Outstation related to Minjilang, Waruwi, Jabiru and Gunbalanya, to address health equity. This includes enhancement of health service delivery and the provision of leadership and governance in developing an effective primary health care service.

Transition of NT Government services at Gunbalanya and related Outstations will likely occur min. 2025.

The Red Lily Health consists of 7 Aboriginal Directors, each representing various lands: Minjilang, Waruwi, Cobourg Peninsula, Jabiru, Kakadu Homelands, Gunbalanya, and Gunbalanya Outstations. There are also 3 Independent Directors with various specialties to assist the Board.

Red Lily Health Board is based in Jabiru and has a business office in Woolner. We have a monthly newsletter, so be sure to let us know if you'd like to receive this by emailing [admin@redlily.org.au](mailto:admin@redlily.org.au).

Please feel free to visit our offices and our website: <https://redlily.org.au/>

### 5.4 WATER

Jabiru is supplied with quality drinking water produced from artesian bores. Artesian water has naturally high calcium content. This may cause a scale build-up on kettles, taps and showerheads, and may also leave a mark on vehicles after washing. Avoid overspray from sprinklers on windows and vehicles, and prevent calcium marks forming by drying surfaces with a soft cloth. Residents are encouraged to conserve water supplies by watering gardens in the evening when the soil is cooler.

West Arnhem Regional Council is responsible for the production, treatment and mains reticulation of water for Jabiru. The water is regularly submitted by Council and tested by the NT Government.

Water produced from three bores situated near Nanambu Creek on the Arnhem Highway is pumped to a storage tank and then to a water tower on Castenzoon Street, from where it is gravity fed to the town.

Water supply issues should be reported to West Arnhem Regional Council.

## 5.5 PEST CONTROL

The 'Top End' is a tropical climate and pests such as cockroaches, spiders and ginger ants come with the Territory. Some household pests can be controlled with baits, which can be purchased from Foodland. There are also regional pest control companies that service Jabiru and surrounding areas.

## 5.6 DENTIST

To find out when a visiting dentist is heading to Jabiru, please call the Jabiru Health Centre.

## 5.7 MOSQUITOES

Jabiru has a high number and variety of mosquitoes throughout the year. Mosquitoes around Jabiru may carry viruses including Ross River, Barmah Forest, Japanese Encephalitis and Murray Valley encephalitis. A vaccine is available for Japanese encephalitis only. It is recommended residents take the following precautions to avoid mosquito bites:

- Avoid areas with high mosquito activity, including damp, dark spaces, coastal swamps and mangroves
- Avoid being outdoors between dusk and dawn when mosquitoes are most active
- Wear light coloured clothing with long sleeves, long trousers and socks in areas of mosquito activity
- Residents may choose to supplement protective clothing with mosquito repellent containing DEET
- Use mosquito coils or mosquito lanterns in outdoor areas around the home
- Reduce opportunities for mosquitoes to breed in outdoor areas by removing or covering containers and puddles of sitting water.

## 5.8 MELIOIDOSIS

Melioidosis is a serious disease caused by bacteria called *Burkholderia pseudomallei*, which live in tropical soils and water. Heavy rainfall brings them up into surface water and soil, where they can be picked up by the wind and spread in the air. It is important to wear shoes outdoor to minimise risk.

Melioidosis requires urgent medical attention as it can be fatal if not treated with the right antibiotics.

# Restrictions



## 6.1 ALCOHOL

It is advisable to inform any of your visitors, who may be planning to purchase takeaway alcohol in Jabiru, to purchase it prior to coming to the area. Take-away alcohol is restricted in Jabiru with the following conditions:

- The Jabiru Golf Club is the only alcohol take-away outlet in Jabiru
- Only members of the Jabiru Golf Club are allowed to purchase take-away alcohol at the Golf Club
- Alcohol take-away is restricted to one bottle of wine or spirits and one carton of beer per member, per day at the Golf Club
- Alcohol is not to be purchased at the Jabiru Golf Club and then given or sold to non-members. Harsh penalties apply.

The following restrictions apply to all residents and visitors of Jabiru:

- The Jabiru township and a few small areas are exempt from restrictions, but it is important to know where and when you can drink alcohol.
- Drinking alcohol while fishing at the billabongs and creeks in Kakadu is prohibited.

There are a number of licensed premises in Jabiru where alcoholic beverages can be purchased for consumption on the premises with the following restrictions:

- The Jabiru Golf Club: Must be a member or signed in as a guest
- The Aurora Kakadu Lodge: With a meal only or as a bona fide lodger at the premises
- Mercure Kakadu Crocodile Hotel: During licencing hours

## 6.2 PERMITS AND ABORIGINAL LAND

Jabiru is located on Aboriginal land and within the Mirarr Clan Estate. It is expected that all residents and visitors will respect Aboriginal culture and maintain a positive relationship with the local Aboriginal people within Jabiru and from the surrounding communities. An Aboriginal community in Jabiru is located on the western side of Jabiru Lake and is known as Manaburduma. Access to Manaburduma is restricted.

There are many places in Kakadu National Park where access is restricted. These places are clearly marked with appropriate signage. Please avoid these restricted areas, as they may be Aboriginal communities, private living areas, or significant Aboriginal sites.

In accordance with Native Title Rights, traditional owners and other relevant Aboriginal people continue to hunt and carry out other cultural activities within Kakadu National Park. These rights cannot be transferred to others. This means that even in the presence of recognised traditional owners, certain activities (e.g. pig hunting, fishing in restricted areas, etc.) remain prohibited to all people other than Native Title Right holders.

Manaburduma and Kakadu National Park (excluding Jabiru Township and some managed campgrounds) are declared Prescribed Areas under the Northern Territory National Emergency Response Act 2007. Consequently, the following restrictions apply.

### **NO LIQUOR**

It is an offence to bring, possess, consume, supply, sell or control liquor in a prescribed area without a liquor permit or licence.

It is not an offence to directly transport unopened liquor through a prescribed area provided you can clearly demonstrate your destination is outside the prescribed area.

### **PROHIBITED MATERIAL**

It is an offence to bring, possess, supply, sell or transport certain prohibited materials in a Prescribed Area.

Heavy penalties apply.

Entry into neighbouring Arnhem Land requires a Northern Land Council (NLC) permit. Permit applications can be lodged with the NLC Office in the Jabiru Town Plaza or by your employer for work-related entry.



**BOWALI VISITOR CENTRE**

P: (08) 8938 1120

**OPENING HOURS**

Mon - Sun 8.00am - 5.00pm

**KAKADU NATIONAL PARK  
HEADQUARTERS**

P: (08) 8938 1120

**OPENING HOURS**

Mon - Fri 8.00am - 5.00pm

Sat - Sun CLOSED

**NUISANCE ANIMALS**Nuisance animals should be reported to  
Council administration on:

P: (08) 8979 9444

E: [info@westarnhem.nt.gov.au](mailto:info@westarnhem.nt.gov.au)*Native plants***6.3 ROAD CONDITIONS AND ACCESS**

For up to date information about road conditions and access throughout Kakadu, contact Bowali Visitor Centre. The Kakadu National Park Road and Access Report is updated regularly and is available at <https://parksaustralia.gov.au/kakadu/access/>, or check out the NT Road Report on <https://roadreport.nt.gov.au/>.

**6.4 ANIMALS**

Because of Jabiru's unique location within the Kakadu National Park World Heritage area, a number of restrictions on animal ownership are in place to protect the natural values of the region. These restrictions are governed by the Kakadu National Park Management Plan and the West Arnhem Regional Council (Jabiru Town) By-laws 2024.

Residents are permitted to keep a maximum of two dogs per household. Fish which are native to the Magela Creek system can also be kept, however a permit is required to collect specimens for this purpose. Possession of cats and any other animal is not permitted and may attract a penalty, regardless of any other permits issued by the NT Government. For more information contact Kakadu National Park Headquarters.

West Arnhem Regional Council administers the West Arnhem Regional Council By-laws, under which a maximum of two dogs per household may be kept. All dogs are required to be registered and kept under effective control at all times. Council authorised officers may seize and impound offending animals and issue infringement notices for breaches of the By-laws. Copies of the by-laws may be obtained from the Council office in Jabiru Plaza or [www.westarnhem.nt.gov.au](http://www.westarnhem.nt.gov.au).

The West Arnhem Regional Council and Parks Australia urge locals not to feed stray dogs in and around Jabiru. Rubbish bins also need to be secured to stop dogs scavenging through scraps.

**6.5 PLANTS**

In order to protect Kakadu's unique ecosystems, the introduction of plants into Kakadu National Park, including into Jabiru for residential gardens, is restricted. A list of both approved and prohibited plant species for Jabiru residents is available from the Kakadu National Park website. All plants brought into Jabiru should be checked to ensure they are ant free. If you do find ants in a new pot plant from outside the park, please contact Kakadu National Park to arrange to have them identified. Jabiru residents can bring in sterilised potting mix for home gardens without a permit.

## 6.6 FISHING AND BOATING

Fishing and boating are popular activities enjoyed by Jabiru residents. Due to Kakadu's status as a World Heritage listed national park, specific laws and regulations apply to fishing and boating which were created to protect the park's ecosystems. Fishing and boating are prohibited in certain areas of Kakadu; Northern Territory bag limits apply; and Kakadu-specific rules govern the use of fishing equipment and fishing behaviour.

What is permitted?

- Landing nets (for landing fish only)
- Single hook rigs and lures
- Fish caught in the park can be used as bait (though never as live bait)

What is not permitted?

- Nets, firearms, spears or traps
- Live baiting
- Processed bait (except in coastal areas)
- Taking crabs
- Commercial fishing
- Cleaning fish within 50m of a water body, unless in a designated fish cleaning facility
- Non-motorised boats
- Camping in vessels

Fishing and boating can be dangerous in Kakadu due to large numbers of aggressive estuarine crocodiles, strong currents, sand bars, submerged logs, and rapid changes in the weather. Some important safety tips:

- Remain vigilant and avoid crocodiles at all times
- Check weather forecasts and tide times
- Carry appropriate safety equipment
- Avoid boating at night
- Seek local advice where possible before heading out
- Carry an up-to-date EPIRB

For more information about fishing and boating in Kakadu, see: <http://www.parksaustralia.gov.au/kakadu/do/fishing-and-boating.html>

Kakadu National Park provides a very comprehensive fishing and boating park note containing Kakadu-specific fishing and boating regulations, maps indicating restricted waterways, boating safety and crocodile safety information. Download a free copy here: <http://www.parksaustralia.gov.au/kakadu/do/fishing-and-boating.html>

For detailed information about NT fishing regulations, see: <http://www.nt.gov.au/>



*Fishing in Kakadu*



## DETECTING BATS

- Do not handle bats
- Bats are a protected species in the NT
- Action must be taken before colonies become established, not after
- In the initial stages, sprinklers in trees and loud noises (e.g. air horns, banging on pots) can be effective
- Action must be persistent and consistent
- Always consider your neighbours
- Prevent damage from bat droppings by covering vehicles with a tarpaulin
- A permit is required to trim or remove trees - speak to your landlord
- Reduce the availability of fruit by tying bags around developing fruit on trees and removing excess

## 6.7 BATS

Kakadu is home to a number of bat species. The most obvious to Jabiru residents are the Black Flying Fox (*Pteropus Alecto*) and the Little Red Flying Fox (*Pteropus scapulatus*). Both are megabats common to the NT which are often seen in trees and flying around town. These megabats play an important role in the ecosystem and biodiversity of the Kakadu region.

Their diet consists mainly of fruit, nectar and the pollen of flowers, including eucalypt blossoms, and they pollinate many native species within Kakadu National Park.

While the two species are similar, there are some key differences relevant to Jabiru residents. Black Flying Foxes often remain in Jabiru all year round and congregate in small numbers. Little Red Flying Foxes are migratory, often spending a few months of the year in Jabiru before moving on, and congregate in very large numbers. These large camps of Little Red Flying Foxes can cause noise, damage and health concerns for Jabiru residents.

All flying foxes are protected species in the NT. Once a bat colony is established, significant disturbances to them by humans can breach Australian environmental law. However, Jabiru residents can deter bats from roosting in trees, as long as the bat colony does not have young and provided that actions taken do not harm the bats.

Deterrents such as noise and sprinklers can be effective in this. Residents wishing to retain a bat-free yard are encouraged to look out for 'scout' bats (the first of the colony to identify suitable roosting trees) and to deter them frequently until they move on. In Jabiru, trees cannot be trimmed or removed without a permit from Parks Australia. Residents can contact their landlord if they think such action is required.

## HEALTH RISK

Like all Australian bats, flying foxes have the potential to carry Australian bat lyssavirus (ABL), a virus similar to rabies which causes a serious and usually fatal disease in humans. It is estimated that between 1% and 7% of bats may carry this virus.

ABL can be transmitted from bats to humans when infected bat saliva enters the human body, usually by a bite or scratch, but also by getting bat saliva in the eyes, nose or mouth (mucous membrane exposure) or onto a pre-existing break in the skin.

Coming into contact with bat faeces, urine or blood does not pose a risk of exposure to ABL, nor do living, playing or walking near bat roosting areas.

There have been only three documented cases of ABL infection in humans, all three of these were in Queensland and all cases

have died. To avoid ABL, Jabiru residents are advised to always take the following precautions:

- Do not handle bats, even if they are injured
- If bitten or scratched by a bat, wash the wound thoroughly for a minimum of 5 minutes with soap and water, apply antiseptic and seek immediate medical advice
- If bat saliva comes into contact with your eyes, nose or mouth, or a pre-existing break in your skin, flush the area thoroughly with water for several minutes and seek immediate medical advice
- Contact Jabiru Health Centre on 8979 2018 or the Centre for Disease Control in Darwin on 8922 8044 immediately following any bat exposure as you may require rabies vaccination
- If you find a sick or injured bat, or a bat on the ground, contact Parks on (08) 8938 1120.

# Education



*Jabiru Area School*

## **Jabiru Area School**

**P:** (08) 8938 3333

**E:** jabiru.areaschool@education.nt.gov.au

**Jabiru Principal:** Amy Tambling

## 7.1 JABIRU AREA SCHOOL

Jabiru Area School offers a unique education experience for students from Preschool to Year 12. They provide a comprehensive curriculum that meets the diverse needs and interests of its students. ‘The future is now’ is Jabiru Area School’s mission and through their values of care, creativity and challenge they strive to foster a love for learning and encourage all students to reach their full potential. A variety of pathways are offered to students in the senior years through dual enrolment at Northern Territory School Of Distance Education and Jabiru Area School managed Vocational Education Training opportunities.

Jabiru Area School not only focuses on academic achievements but also has a strong emphasis on embracing the unique culture and history of the local Indigenous communities. It recognises the significance of the Mirarr people, whose land students live and learn on, their culture. The school emphasises cultural awareness and understanding through the Kakadu Curriculum, Kakadu National Park’s Junior Park Ranger program and vast opportunities for learning on country.

The school boasts a large campus with resources to support effective teaching and learning. From well-equipped classrooms to specialised facilities for subjects such as science, technology, and the arts, Jabiru Area School provides a conducive environment for students to explore their interests and talents.

With a dedicated team of experienced teachers and staff, Jabiru Area School ensures a supportive and inclusive learning environment where every student feels valued and encouraged to achieve their goals. The school strives to create a strong sense of community and encourages open communication with parents and caregivers, ensuring that the education provided meets the needs of the students.

The school also offers student-centred support programs for both boys and girls. Clontarf Foundation exists to improve the education, discipline, life skills, self-esteem and employment prospects of young Aboriginal and Torres Strait Islander men. Clontarf support young men from Year 3 to 12. Stars Foundation provides a holistic program that supports Indigenous girls and young women to attend and remain engaged at school, complete Year 12 and move into work or further study. They support young women from Years 3 to 12.

There are established productive partnerships with Caulfield Grammar School, Gundjeihmi Aboriginal Corporation, Energy Resources of Australia, Parks Australia and West

Arnhem Regional Council that collectively enable the school to provide greater opportunities, better resources and flexibility to deliver more engaging curriculum and school to work pathways.

Overall, Jabiru Area School is a hub of learning, where students are provided with a well-rounded education, embracing academic, cultural, and personal development. It plays a vital role in the community by moulding future leaders and nurturing students to become responsible and positive contributors to society. Please phone to make an appointment with the Principal or Assistant Principal to look around the school and enquire about enrolment.

# Churches



*Donation bins at Jabiru Town Plaza*



*St. Peters Catholic Church*

## 8.1 CHURCH

Church Services are held at St. Peters Catholic Church located on Tasman Crescent. Catholic Church mass times can be found here: <https://darwin.catholic.org.au/jabiru-st-peters-church/>

## 8.2 DONATIONS

Donations of clothing can be deposited in the donation bins located outside the Jabiru Town Plaza.

# Shopping

## 9.1 KAKADU SUPERMARKET

The Kakadu Supermarket is located in the Jabiru Town Plaza and stocks a wide range of groceries. Requests can be made to order food that may not normally be kept in stock. It sells camping and fishing equipment, gifts and souvenirs, standard pharmaceutical supplies, clothing, hardware goods, variety goods, cold drinks, a range of fresh fruit and vegetables, fresh bread and barbecue chickens. The supermarket has a deli and a butcher shop, and online and catering orders can be made.

## 9.2 POST OFFICE AND NEWSAGENCY

The Post Office and Newsagency is located in the Jabiru Town Plaza selling magazines, newspapers, gifts, art supplies, fishing tackle and toys and is a Tattsлото outlet. The newsagency is also the post office agent in Jabiru.

### KAKADU SUPERMARKET

**P:** (08) 8979 2077

**F:** (08) 8979 3020

### OPENING HOURS

Mon-Fri	9.00am - 5.30pm
Sat	9.00am - 2.00pm
Sun	Hours may change seasonally

### POST OFFICE & NEWSAGENCY

**P:** (08) 8979 9417

**E:** [jabiru.auspost@westarnhem.nt.gov.au](mailto:jabiru.auspost@westarnhem.nt.gov.au)

### OPENING HOURS

Mon - Fri	10.30am - 5.00pm
Sat	CLOSED
Sun	CLOSED
Public holidays	CLOSED





**MERCURE KAKADU CROCODILE HOTEL**

**P:** (08) 8979 9000  
**F:** (08) 8979 9098

**OPENING HOURS (GIFT SHOP)**

Mon - Sun 6.00am - 11.00pm

**MARRAUDDI ARTS & CULTURE**

**P:** (08) 8979 2777  
<http://www.marrawuddi.com.au/>

**OPENING HOURS**

Mon - Sun 9.00am - 4.30pm

**AIRPORT GIFT SHOP**

**P:** (08) 8979 2481

**OPENING HOURS**

Mon - Sun 7.30am - 4.30pm

**JABIRU SERVICE STATION**

**P:** (08) 8979 2001  
**F:** (08) 8979 2812

**OPENING HOURS**

Mon - Sun 6.30am - 8.30pm

**9.3 MERCURE KAKADU CROCODILE HOTEL**

The Mercure Kakadu Crocodile Hotel features a gift shop, with trading hours from 6.00am to 11.00pm seven days a week. Aboriginal art is on display and can be purchased from the hotel.

**9.4 MARRAUDDI GALLERY**

Marrawuddi Gallery is located at former Kakadu Bakery building on Gregory Place. It stocks a wide range of local Aboriginal arts and crafts, books and gifts and coffee. There is an indoor and outdoor seating area at the Gallery.

**9.5 AIRPORT GIFT SHOP**

The Airport gift shop is located at the Jabiru Airport, approximately 6km from Jabiru. The souvenir shop sells books, t-shirts, jewellery, Aboriginal art, gifts, snacks and drinks.

**9.6 JABIRU SERVICE STATION**

The Jabiru Service Station is located on Lakeside Drive close to the centre of town and is owned by the Gundjeihmi Aboriginal Corporation.

The service station sells petrol, diesel, barbecue gas, papers, groceries, hot foods, vehicle supplies, fishing and camping gear and ice. In addition, the service station operates a mechanical workshop and carries out service and repairs, including air conditioning, tyres and windscreens on all makes and models of vehicles. There is also an ATM located at the service station.

For emergency roadside service only call mobile: 0427 792 004.

**9.7 AURORA KAKADU LODGE AND CARAVAN PARK**

Aurora Kakadu Lodge and Caravan Park is located at the entrance to the Jabiru township and has a small shop in the reception area selling supermarket items and gifts.

# Recreation

## 10.1 POOL AND GYMNASIUM

The Alberto Luglietti Memorial Swimming Pool is currently open five days a week and is open most public holidays (excluding Christmas Day, New Year's Day and Good Friday). The complex features an Olympic-sized swimming pool with shade sail and lane ropes, separate gymnasium, kiosk, covered toddlers' pool, splash pad, jumping pillow, monorail, barbecue area and children's play equipment, all set in pleasant surrounds.

Children aged 12 and under swim for free.

The pool is staffed by qualified lifeguards. Both the pool and gymnasium are available for use by residents and visitors on a casual basis or through the purchase of discounted multi-visit passes and season passes. The Pool holds aqua fitness classes on Tuesdays and Thursdays (enquire within) and periodical learn to swim lessons and other courses.

Contact the pool on 8979 9447 regarding pool passes or any other enquiries.



Albert Luglietti Memorial Swimming Pool



Jabiru Golf Course

## 10.2 SPORTING OVALS

West Arnhem Regional Council maintains three sporting ovals in Jabiru for use by residents and visitors.

- Magela Field is a multi-purpose facility equipped with light towers and can be used for sports including soccer, rugby union, rugby league, and touch football.
- Brockman Oval is used for Australian Rules football and cricket.
- Arnhem Oval is equipped with net facilities for cricket training. Sporting clubs or groups wishing to use the ovals for organised sporting activities should contact Council.

## 10.3 GOLF

The Jabiru golf course has a beautiful scenic layout of nine holes. There are various membership categories which include: ordinary, country golf, country social, student/junior golf, social individual, social spouse and social family. Patrons and visitors can hire push carts and clubs. Other accessories such as gloves, balls, tees and shirts are available at the bar. Hot bar snacks can be purchased at any time. The club is available for private functions at the clubhouse or golf course. For additional information contact the Golf Club.

### JABIRU POOL AND GYMNASIUM

P: (08) 8979 9447

#### OPENING HOURS

Monday: 1.30pm – 6.30pm

Tuesday: 1.30pm – 6.00pm

Wednesday: 1.30pm – 6.30pm

Thursday: CLOSED

Friday: CLOSED

Saturday: 1.30pm – 6.30pm

Sunday: 1.30pm – 6.30pm

Public Holidays: 1.30pm - 6.30pm

### WEST ARNHEM REGIONAL COUNCIL

P: (08) 8979 9444

W: [www.westarnhem.nt.gov.au](http://www.westarnhem.nt.gov.au)

E: [info@westarnhem.nt.gov.au](mailto:info@westarnhem.nt.gov.au)



Lake Jabiru Park



Jabiru Area School MPA

#### WEST ARNHEM REGIONAL COUNCIL

**P:** (08) 8979 9444

**E:** [info@westarnhem.nt.gov.au](mailto:info@westarnhem.nt.gov.au)

**W:** [www.westarnhem.nt.gov.au](http://www.westarnhem.nt.gov.au)

### 10.4 FISHING CLUB

The Alligator Fishing Club Inc is currently not active in the community, however you can follow the Club's Facebook page.

### 10.5 LAKE JABIRU PARK

Lake Jabiru Park is a public leisure facility maintained by West Arnhem Regional Council, located on the edge of Jabiru Lake on Civic Drive. The area features free barbecue facilities, a children's playground, and public conveniences.

Swimming in the lake is prohibited due to the risk of crocodiles and no fishing, camping or use of motorised or un-motorised boats is allowed.

A 2.5km trail around the lake is suitable for activities such as walking dogs and jogging, and provides vantage points for photography, particularly at sunset.

### 10.6 CLUBS, SPORTS AND ASSOCIATIONS

Jabiru has a variety of sporting facilities and clubs. Enthusiasts can enjoy tennis, soccer, basketball, AFL, shooting, golf, touch football, netball and bowls to name a few.

Check the 'What's On' column in The West Arnhem Wire or contact the West Arnhem Regional Council for a complete list of sports available in Jabiru.

Council maintains tennis, netball and basketball courts which are located at Lakeside Drive. Seasonal netball, tennis and basketball competitions are conducted throughout the year. For details, contact Council.

### 10.7 COMMUNITY HALL

Jabiru Community Hall is available for hire 7 days per week to the general public and also community groups. For bookings contact West Arnhem Regional Council.

## 10.8 PLAYGROUND EQUIPMENT

Play equipment for younger children is located at Jabiru Lake Park, Magela Field and at the swimming pool complex. A fitness circuit for adults is situated at the edge of Magela Field on Kinchela Road.

## 10.9 BUSHWALKING

There are many clearly marked and well-maintained walking tracks throughout Kakadu National Park showcasing a wide variety of natural and cultural features. These walks vary in length and difficulty, from short, wheelchair-accessible paved tracks and boardwalks, to more strenuous day walks through rugged country. Some of these walks may only be open at certain times of the year. For information and advice about these walks:

- Visit <http://www.parksaustralia.gov.au/kakadu/do/walks.html>
- Download Kakadu National Park's Visitor Guide at <http://www.parksaustralia.gov.au/kakadu/pub/visitor-guide.pdf>
- Visit Bowali Visitor Centre

Extended overnight bushwalks are also available for very experienced bushwalkers. They are unmarked and very physically demanding, requiring excellent navigation skills and a high level of fitness. Due to safety and cultural reasons, a permit is required for anyone intending to undertake an overnight bushwalk. For more information about this process and approved routes, contact the permits section at Kakadu National Park.

## 10.10 CAMPING

Throughout Kakadu, there are a range of campgrounds with various levels of facilities, from generator zones, hot water showers and swimming pools, through to bush camping areas with no potable water or waste disposal. Some campgrounds are commercially operated, while others are managed by Kakadu National Park. Some of the more remote bush camping sites require a permit. For more information:

- Visit <http://www.parksaustralia.gov.au/kakadu/plan-your-trip/camping-and-caravans.html>
- Download Kakadu National Park's Visitor Guide at <http://www.parksaustralia.gov.au/kakadu/pub/visitor-guide.pdf>
- Visit Bowali Visitor Centre

### BOWALI VISITOR CENTRE

**P:** (08) 8938 1120

### OPENING HOURS

Mon - Sun 8.00am - 5.00pm

### PERMITS SECTION, KAKADU NATIONAL PARK

**P:** (08) 8938 1140

### OPENING HOURS

Mon - Fri 9.00am - 4.00pm

Sat - Sun CLOSED



**JABIRU PISTOL CLUB**

P: Clint on 0417 890 826

**ARMY CADETS**

P: 0467 605 496

**JABIRU CREATIVE GROUP**

E: taniakeirnan@hotmail.com

*Sports and Recreation**Unit 72 Cadet Unit - Arnhem Land***10.11 SOCCER**

There was a social soccer group where people play and train for fun and fitness. Please see the Jabiru Noticeboard Facebook page for updates on this.

**10.12 JABIRU CREATIVE GROUP**

The Jabiru Creative Group commences in February 2025 and is held every Wednesday evening (6:00pm - 8.00pm) at the Jabiru Hall. The group is for 14 years and over and is free. This is a great opportunity to learn and share skills in a friendly, social environment. Speak to Tarnia for more details.

**10.13 ARMY CADETS**

72 Army Cadet Unit - Arnhem Land are a part of the Remote Indigenous Army Cadets (RIAC), with 30 cadets from around Kakadu forming the Jabiru Unit. They regularly participate in a range of training activities, camps, events and more.

**10.14 AFL**

The Jabiru Bombers AFL Club was established in 1982 and consists of adult players from the Jabiru, Darwin and Gunbalanya region. There is a men's and women's team established in Jabiru. They play throughout the wet season in the Darwin-based competition with a mixture of both Darwin and home games. Training is on Tuesday and Thursday evenings from 5:30pm at the home ground of Brockman Oval. There is free entry with a canteen on site for our home games. Come and enjoy the game with a view of the spectacular Arnhem escarpment in the background. Jabiru has also been established as an official Auskick Centre for young people. Keep an eye out for details of up-and-coming games by following the Jabiru Bombers Facebook page.

**10.15 JABIRU PISTOL CLUB**

The Jabiru Pistol Club is a registered Northern Territory Gun Club that specialises in NRA Action Pistol Competition. Members compete at a state and national level and the club itself holds an annual Action Pistol Open event which attracts competitors from all over Australia. Members meet most Thursday evenings for club practice. Call Clint for more information on 0417 890 826.



*Jabiru Pistol Club*

**10.16 KAKADU DEADLY RUNNERS & WALKERS**

The Kakadu Deadly Runners and Walkers is for people who want to inspire others, challenge themselves, encourage and participate in a healthy living lifestyle. All are welcome to join in the training sessions. Visit their Facebook page for more information.



*Kakadu Runners*

**10.17 JABIRU UNDERWATER HOCKEY**

Underwater hockey is a non-contact sport in which two teams compete to manoeuvre a puck across the bottom of a swimming pool into goals. People of all ages are welcome to pop along. No experience necessary. Check their Facebook page for more updates.



*Jabiru Library activities*

**10.18 JABIRU JUNIOR BUSHRATZ**

Junior rugby union ceased in 2022. Check their Facebook page for more updates.



*Jabiru Bombers*

# Children's

## CHILDCARE CENTRE

P: 0417 927 890

E: jabiruchildcare@westarnhem.nt.gov.au

## OPERATING HOURS

Mon - Fri 7.30am - 5.00pm

Sat - Sun CLOSED



## 11.1 CHILDCARE CENTRE

West Arnhem Regional Council operates the Jabiru Childcare Centre, a licensed, long day-care provider that caters for children from birth up to 5 years of age.

Jabiru Childcare Centre operates year round, with a break over the Christmas and New Year period. The centre and its dedicated early childhood educators work in line with the National Quality Framework and the Education and Care Services National Regulations to provide a high quality and fun educational program to the families of Jabiru.

Staff provide nutritionally balanced meals, encourage healthy eating habits and practices, and include multicultural foods to reflect each family's diversity.

The well-equipped centre is located in Jabiru Plaza and has a large grassy and shady outdoor area with a variety of play equipment.

## 11.2 PLAYGROUP

Currently, the Jabiru Playgroup is not running. Please see their Facebook page for updates.

## 11.3 BABYSITTERS

Babysitters advertise their services on the Jabiru noticeboards but word of mouth is always the safest way of finding a sitter.

# Accommodation AND MEALS

## 12.1 JABIRU SUPERMARKET

Jabiru Supermarket has a selection of foods available for takeaway, including freshly-made sandwiches, rolls, hot meals, pies and sausage rolls as well as coffee. The deli can cater for events and also offers fresh bread and barbecue chickens. There is also an inside air-conditioned eating area.

## 12.2 MERCURE KAKADU CROCODILE HOTEL

The hotel features 110 guest rooms, a pool for hotel guests, a gift shop, a dining room and a bar. Booking in advance for accommodation is strongly recommended, especially during the dry season. Call ahead in the wet season to get a great locals deal on meals. There is a function room for hire. Tour bookings can be done at the hotel. The restaurant is open daily for breakfast, lunch and dinner (reservations essential). Takeaway food is also available from the restaurant. Ask staff to receive the Jabiru locals discount.

## 12.3 KAKADU LODGE AND CARAVAN PARK

The Kakadu Lodge and Caravan Park, located on Jabiru Drive, has self-contained, air-conditioned cabins, both powered and unpowered camping sites, a small shop that sells a variety of goods, and a swimming pool. Residents of Jabiru are permitted to use the pool with the purchase of a meal or drink.

Kakadu Lodge has a takeaway alcohol licence for all in-house guests and campers. There are self-imposed restrictions on the quantities of alcohol sold to each person on a daily basis.

Ask staff to receive the Jabiru locals discount.

### JABIRU SUPERMARKET

**P:** (08) 8979 2077

**F:** (08) 8979 3020

### OPENING HOURS

Mon-Fri	9.00am - 5.30pm
Sat	9.00am - 2.00pm
Sun	closed

### MERCURE KAKADU CROCODILE HOTEL

**P:** (08) 8979 9000

**F:** (08) 8979 9098

**E:** [hotel@crocodilehotel.com.au](mailto:hotel@crocodilehotel.com.au)

**W:** [kakadutourism.com](http://kakadutourism.com)

### KAKADU LODGE AND CARAVAN PARK

**P:** (08) 8979 2422

### OPENING HOURS: BISTRO

Mon - Sun 5.00pm - 9.00pm

### OPENING HOURS: BAR

Mon - Sun 4.00pm - 10.00pm



*Kakadu Lodge and Caravan Park*





#### COOINDA LODGE KAKADU

**P:** (08) 8979 1500

**F:** (08) 8979 0148

#### OPENING HOURS

##### Dry Season

Mon - Sun 6.00am - 8.00pm

##### Wet Season

Mon - Sun 6.00am - 7.00pm

#### BAR

Mon - Sun 10.00am - 10.00pm  
(seasonal)

#### GENERAL RETAIL AND GIFT STORE

##### Dry Season

Mon - Sun 6.00am - 8.00pm

##### Wet Season

Mon - Sun 6.00am - 6.00pm

#### ANBINIK KAKADU RESORT

**P:** (08) 8979 3144

**F:** (08) 8979 2176

**E:** [anbinik@kakadu.net.au](mailto:anbinik@kakadu.net.au)

**W:** [www.kakadu.net.au](http://www.kakadu.net.au)

#### OPENING HOURS

##### Dry season

Mon - Sun 7.00am - 7.00pm

##### Wet season

Mon - Sun 9.00am - 5.00pm

## 12.4 COOINDA LODGE KAKADU

Cooinda Lodge Kakadu provides 48 lodge rooms, 100 powered camping/caravan sites and up to 200 unpowered camping sites. The lodge rooms are air-conditioned (individually controlled) and have a television, fridge, iron and ironing board, and tea and coffee making facilities. The campground has 100 powered sites and 200 unpowered sites. Bathroom facilities are available with washing and drying machines for guest use.

Locals rates are available for NT residents so be sure to ask for mates rates when booking the hotel.

Other facilities include the Barra Bar and Bistro and Mimi's air conditioned restaurant for either a relaxing drink with your friends or alfresco dining. There is a large swimming pool, which can be used by Jabiru residents if a meal is purchased, and a smaller pool designated for Lodge guests only.

An ATM is available for cash out facilities. The only mobile coverage is Telstra.

## 12.5 ANBINIK KAKADU RESORT

Anbinik Kakadu Resort, formerly Lakeview Park Kakadu, offers five different accommodation options: its unique bush bungalows; air-conditioned double rooms; spacious two bedroom cabins; powered en-suite van sites and the latest edition, Anbinik suite rooms complete with courtyard bathrooms and day beds on the deck. Accommodation options include tea and coffee making facilities, fridge and cooking equipment are all available. Facilities include a pool, seasonal restaurant, guest laundromat, barbecues and a tour booking desk. Anbinik Kakadu Resort is the ideal location for independent travellers to base themselves in order to self-drive and/or take advantage of dedicated day tours, flights and cruises.

## 12.6 JABIRU GOLF CLUB

The Jabiru Golf Club is located on Jabiru Drive and provides hot meals and cold drinks.

The Golf Club welcomes members and visitors. Facilities available at the club include a 9-hole golf course and hire clubs, pool tables, KENO, dartboard, ATM and an outdoor sitting area and kids indoor and outdoor play areas. Takeaway alcohol is available to members only.



*Jabiru Golf Club*

### JABIRU GOLF CLUB

**P:** (08) 8979 2575

**F:** (08) 8979 2117

**E:** jabirugolfclubinc1@bigpond.com.au

**W:** www.jabirugolfclub.com.au

### BAR OPENING HOURS

Mon	4.00pm - 7.00pm
Tues	4.00pm - 7.00pm
Wed	4.00pm - 8.30pm
Thurs	4.00pm - 9.00pm
Fri	4.00pm - 10.00pm
Sat	2.00pm - 7.00pm
Sun	1.00pm - 6.00pm

# Services

## WEST ARNHem REGIONAL COUNCIL

**P:** (08) 8979 9444

**E:** [info@westarnhem.nt.gov.au](mailto:info@westarnhem.nt.gov.au)

**W:** [www.westarnhem.nt.gov.au](http://www.westarnhem.nt.gov.au)

## COMMUNITY CARE SERVICES

**P:** (08) 8979 9444

**E:** [info@westarnhem.nt.gov.au](mailto:info@westarnhem.nt.gov.au)

**W:** [www.westarnhem.nt.gov.au](http://www.westarnhem.nt.gov.au)

## 13.1 WEST ARNHem REGIONAL COUNCIL

Some of the services provided by West Arnhem Regional Council include:

- Jabiru Public Library and WiFi access
- Swimming pool and gymnasium
- Childcare Centre
- Jabiru Post Office
- Aged Care and Disability Services
- Centrelink
- Landfill and recycling operations
- Town hall, recreation and sports facility hire
- Teleconference facilities and meeting room hire
- Sport and recreation programs
- Dog registration
- Mobile phone and printer ink collection and recycling
- Laminating, printing and photocopying
- Key cutting
- Stall holder permits in the township

## 13.2 JUSTICE OF THE PEACE

For a complete list of people in Jabiru who may serve as a Justice of the Peace, visit <http://www.nt.gov.au/justice/database.shtml> and search under J.

## 13.3 COMMUNITY CARE SERVICES

West Arnhem Regional Council (WARC) provides Community Care Services throughout Jabiru and Kakadu which assists people to lead quality lives and remain living in their own homes by providing care, maintenance and social support services. WARC provides services through:

- Home Care Packages (HCPs)
- The Commonwealth Home Support Program (CHSP); and
- Disability Support Service through the National Disability Insurance Scheme (NDIS)

Services vary for each client based on their needs, but may include client care coordination, centre based activities, personal care, meals, social support, cultural support, transport, domestic assistance – personal laundry, carer respite, counselling support, information and advocacy and home maintenance.

### 13.4 CENTRELINK AGENTS

The Jabiru Centrelink is located in the Jabiru Town Plaza, in the same building as the Community Hall. The entrance is adjacent to the parking lot. Centrelink has a trained agent who can assist you:

- In answering basic questions on payments and services
- In referring you to other Centrelink services
- In booking an appointment if necessary, at your nearest Centrelink office
- To use the telephone to ring the Indigenous Call Centre
- To use the fax and photocopy machines
- To use the computer
- To fill out and lodge Centrelink forms

The Jabiru Centrelink Agent is not able to make payments or decisions about your payments.

### 13.5 ABORIGINAL ASSOCIATIONS

In the Kakadu Region there are five main Aboriginal Associations:

- Gundjeihmi Aboriginal Corporation (GAC)
- Gundjeihmi Aboriginal Corporation Jabiru Town
- Djabulukgu Aboriginal Association
- Warnbi Aboriginal Corporation
- Djigardaba Enterprise Aboriginal Corporation
- Red Lily Health Board

Gundjeihmi Aboriginal Corporation (GAC) is an organisation established, managed and controlled by the Mirarr people who are the Traditional Aboriginal Owners of the land on which Jabiru is located as well as other areas within Kakadu National Park, including the Ranger Project Area and the Jabiluka Mineral Lease. The GAC has developed long-term economic strategies to assist Mirarr post-mining and is involved in many aspects of community development.

Gundjeihmi Aboriginal Corporation Jabiru Town holds the township lease over Jabiru. It is an Indigenous corporation whose members are the Mirarr People, the Traditional Owners and Native Title Holders for Jabiru. GACJT manages the Jabiru Township on behalf of Mirarr Traditional Owners and is the key decision-making body for developments across the Township area. This is done primarily through the issuing of sub-leases and licences for the many businesses

#### CENTRELINK AGENTS

**P:** (08) 8979 3891 or 8979 2011

**F:** (08) 8979 3985

**E:** Jabiru.Centrelink@westarnhem.nt.gov.au

**Indigenous call centre:** 1800136 380

#### OPENING HOURS

Mon - Fri 9.00am - 12.00pm

1.00pm - 3.30pm

Sat - Sun CLOSED

#### GUNDJEIHMI ABORIGINAL CORPORATION

**P:** (08) 8979 2200

#### GUNDJEIHMI ABORIGIBAL CORPORATION JABIRU TOWN

**P:** (08) 7942 2136

#### DJABULUKGU ABORIGINAL ASSOCIATION

**P:** (08) 8938 3200

#### WARNBI ABORIGINAL CORPORATION

**P:** (08) 8979 3333

#### DJIGARDABA ENTERPRISE ABORIGINAL CORPORATION

**P:** 0428055885



#### JABIRU PUBLIC LIBRARY

**P:** (08) 8979 9460

**Online library catalogue:**

[www.westarnhem.nt.gov.au](http://www.westarnhem.nt.gov.au)

**OPENING HOURS**

Mon - Fri 10.30am – 4.30pm

Sat CLOSED

Sun CLOSED

Public Holiday CLOSED

**TEABBA RADIO**

98.9fm

#### JABIRU PROPERTY SERVICES:

0499 370 712

**E:** [property@jabirupropertyservices.com.au](mailto:property@jabirupropertyservices.com.au)

**W:** [www.jabirupropertyservices.com.au](http://www.jabirupropertyservices.com.au)

**A:** Shop 1, Jabiru Plaza, 25 Castenzoon Street, Jabiru NT 0886

and government services located in Jabiru. The existence of GACJT ensures that income from the township lease benefits the Mirarr's economic and community development across the Mirarr estate.

Djabulukgu Aboriginal Association's (DAI) membership is made up of traditional clan groups between Jabiru and Gunbalanya. It is a community development organisation with a strong emphasis on up skilling local Bininj to take up employment opportunities within its enterprises, cultural and social services. DAI has a merging Conservation Land Management function under Njanjma Rangers and has a strong economic development focus in which it creates sustainable employment. Currently some of their business ventures include the recently expanded Anbinik Kakadu Resort, Guluyambi River Cruises, Arnhemlander Tours, the Border Store at East Alligator and Hawk Dreaming Wilderness Lodge at Cannon Hill.

Warnbi Aboriginal Corporation provides municipal services and contractual work for other local organisations and businesses.

Djigardaba Enterprise Aboriginal Corporation represents the Murumburr clan of the central region of Kakadu National Park.

### 13.6 JABIRU PROPERTY SERVICES

Jabiru Property Services is a Mirarr owned enterprise that manages and maintains a pool of residential properties to support the Mirarr Vision and Masterplan for the town of Jabiru.

On behalf of the Mirarr Traditional Owners we provide access to well maintained and sustainable rental accommodation for businesses operating within and contributing to making Jabiru an economically and socially vibrant community.

Jabiru Property Services operates as a not-for-profit organisation and any residual funds are reinvested into improving the standard of housing in Jabiru.

Jabiru Property Services offer a range of properties for long-term rental and manages a small stock of short-term furnished and serviced accommodation to meet demand from business-related visitors for use as accommodation for periods of less than three months.

We support existing businesses and service providers in the region and are also keen to welcome new businesses. If your business has upcoming housing requirements in Jabiru, please contact us.

### 13.7 PUBLIC LIBRARY

Jabiru Public Library offers a varied collection, including adult and junior fiction, non-fiction, reference materials and

picture books for young children. Library users can also browse through a range of other resources.

Proudly featuring the ‘Kakadu Collection’, the Library aims to provide a culture-rich environment with resources in all formats which focus on the Kakadu and West Arnhem region. An online catalogue enables users to search for resources held both within the Jabiru Library, or anywhere in the Northern Territory. The library also offers BorrowBox which provides access to a large range of audio books. Free WiFi access and computers are also available. Weekly activities including story time are held at the facility.

The Library features a meeting room and has a Street Library stationed at the Jabiru Swimming Pool.

TEABBA Radio transmits out of the Jabiru Library. Tune into 98.9fm to listen. New residents and visitors to the region can join the library by popping in.

### 13.8 NORTHERN LAND COUNCIL

The Northern Land Council (NLC) is a peak body representing Aboriginal landowners in the Top End. The Jabiru Regional Office issues permits for business people and visitors wishing to visit Aboriginal land in Arnhem Land. Please contact the NLC directly for Arnhem Land permits.

### 13.9 CDP

This service is delivered by ALPA located at the Bininj Kunwok Centre.

### 13.10 CATHOLICCARE NT

CatholicCare has an office in Jabiru, please contact them directly regarding the following services:

- Family Mental Health Support Service
- Children and Youth Counselling
- Parent Education
- Children and Parenting

### 13.11 CLEANING

There are a number of local commercial operators available in Jabiru to carry out commercial and private cleaning services:

- Vacate or bond cleans
- General household cleaning
- Commercial space cleaning

#### NORTHERN LAND COUNCIL

**P:** (08) 8938 3000

**F:** (08) 8979 2650

**W:** www.nlc.org.au

#### OPENING HOURS

Mon - Fri 8.00am - 4.30pm

Sat - Sun CLOSED

#### CATHOLICCARE NT (JABIRU)

**P:** (08) 8979 2266

**E:** jabiru@catholiccarent.org.au

#### ALPA

Mon - Fri 8.00am - 4.30pm

**P:** 1800 313 143

#### CHAM NT CLEANING SERVICES

**P:** 8979 3781 or 0407 726 475

#### DEADLY CLEANERS

**P:** 0400 971 805

#### KML CLEANING SERVICES

**P:** 0427 52 3082

### 13.12 VETERINARY

West Arnhem Regional Council schedules periodical vet visits. Contact Council to find out when the next vet visit will be.

#### INJURED WILDLIFE

If you encounter injured wildlife, please contact Kakadu National Park for assistance and instructions. In Kakadu, including Jabiru, it is illegal to care for wildlife unless you have been authorised to do so by Kakadu National Park. To become an authorised wildlife carer in Kakadu, please contact Kakadu National Park Headquarters on (08) 8938 1100.

### 13.13 DTAR

For business support and information on funding opportunities, visit the Department of Trade, Business & Asian Relations website: <https://dtbar.nt.gov.au/homepage>

# Mechanical

## REPAIRS & FUEL



### JABIRU SERVICE STATION

P: (08) 8979 2001  
A/H: 0427 792 004  
(Emergency service only)

### 14.1 JABIRU SERVICE STATION

Mechanical repairs are available at the Jabiru Service Station, which is located on the corner of Leichardt Street and Lakeside Drive, close to the centre of town. Mechanics work from 7.30am to 4.30pm five days a week. A selection of spare auto parts and tyres can be purchased at the station. There is 24-hour emergency service and roadside assistance through TIO or AANT memberships. If not associated with any provider, there is a fee for service call-outs.

### 14.2 OPAL FUEL

Opal Fuel is available from the Jabiru service station. Jabiru residents should note that only vehicles using diesel or Opal fuel may be taken into areas affected by the Volatile Substance Abuse (VSA) Prevention Act. These areas do not include the Jabiru townsite. However, even if a Management Plan is not in force, it is important that residents and visitors use volatile substances responsibly. The following practices are recommended:

- Use Opal fuel when and where available.
- If Opal is not available use lockable fuel cap or diesel powered equipment.
- Secure inhalants and fuel-powered equipment.
- Lock up aerosols, glues and other substances that may be abused.
- Remove or safely dispose of all glues, paints, aerosols and other inhalants when leaving a community.

Information on the requirements of VSA management plans and the areas affected can be found on the NT Department of Health website: [www.health.nt.gov.au/Alcohol\\_and\\_Other\\_Drugs/Volatile\\_Substances/Gazetted\\_Management\\_Areas\\_and\\_Plans/](http://www.health.nt.gov.au/Alcohol_and_Other_Drugs/Volatile_Substances/Gazetted_Management_Areas_and_Plans/)

# Freight Services,

## TRANSPORT AND CHARTERS

### 15.1 NORTHLINE

Northline provides regularly services to more than 18 communities including Jabiru, Katherine, Port Keats and Oenpelli (Gunbalanya). Northline QAL operates from the existing Northline Darwin Branch.

#### NORTHLINE

**P:** (08) 8947 0744

**F:** (08) 8984 3895

**E:** darwin@northline.com.au

### 15.2 TOLL

Toll Darwin provides a freight service to Jabiru supported with a weekly refrigerated and general freight service. Toll Darwin additionally supply a weekly service for general and refrigerated freight into Oenpelli.

#### TOLL

**P:** (08) 8944 1000

### 15.3 AJ COURIERS & HAULAGE

A J Couriers & Haulage is the Darwin freight company that can get your cargo to where it's needed and visit Jabiru daily and Gunbalanya (in the dry season).

#### AJ COURIERS

**P:** (08) 8931 4922

**A:** 9 Angliss Rd, Berrimah NT 0828

**E:** admin@ajch.com.au

### 15.4 BUS SERVICE

Barefoot bus & Katherine Coaches have a transport bus service between Jabiru, Gunbalanya and Palmerston, Mondays, Wednesdays and Fridays.

They also offer small and large charters ranging from 7 seats through to 57 seats.

ALPA Jabiru runs a local bus service for adults to get from the Kakadu communities into Jabiru in the morning and back out again in the afternoon. Feel free to call on 1800 313 143.

#### JABIRU BUS SERVICE

**P:** 1800 263 442

**E:** bookings@katherinecoaches.com.au

**W:** <https://katherinecoaches.com.au/service-location/darwin-to-gunbalanya-oenpelli/>

#### ALPA JABIRU BUS SERVICE

**P:** 1800 313 143





#### **NORTH AUSTRALIAN HELICOPTERS**

**P:** (08) 8979 2444  
**F:** (08) 8979 2272

#### **OPENING HOURS**

Mon - Sun 7.00am - 5.00pm

#### **JABIRU AIRPORT**

**P:** (08) 8979 2411

#### **KAKADU AIR**

**P:** 1800 089 113  
**E:** [reservations@kakaduai.com.au](mailto:reservations@kakaduai.com.au)  
**W:** [www.kakaduai.com.au](http://www.kakaduai.com.au)

#### **GUNBALANYA AIR CHARTERS**

**P:** 08 8979 0165  
**E:** [gunair@bigpond.com](mailto:gunair@bigpond.com)  
**W:** <https://www.gunair.com.au/>

#### **NAUTILUS AVIATION**

**P:** 07 4034 9000  
**W:** <https://www.nautilusaviation.com.au>

### **15.5 NORTH AUSTRALIAN HELICOPTERS**

North Australian Helicopters are located at Jabiru Airport and provides charters for tourism, sightseeing, filming and photography from Jabiru. NAH also operates mustering, aerial fire control, surveying, mining and exploration, powerline and pipeline surveys, heli-rescue and feral animal control.

### **15.6 KATHERINE AVIATION**

Katherine Aviation facilitate a Jabiru offering scenic and charter flights.

### **15.7 AIR SERVICES**

Jabiru Airport is located at Jabiru East. Take the road towards the mine and follow the signage. Scenic flights can be booked at the Jabiru Airport, at The Scenic Flight Company or at the Kakadu Tourism and Travel Shop in the Jabiru Plaza.

### **15.8 KAKADU AIR**

Kakadu Air has a large gift shop and a snack shop at the airport.

Established in 1981 Kakadu Air offers a freight and passenger (charter) service to all ports in Arnhem Land and surrounding areas from Jabiru or Darwin. Single and twin engine aircraft are available.

The fleet in Jabiru: 4 x GA8 Airvans 7 seater Single Engine Aircraft, 2 x Cessna 210 5 seater Single Engine Aircraft. Our Darwin Fleet (which can be requested for quotes out of Jabiru): 2 x Cessna 402 8 seater Aircraft, 1 x Cessna 404 10 seater Aircraft, 1 x Cessna 310 5-Seater Twin Engine Aircraft, 1 x Cessna 210 5-seater Single Engine Aircraft.

Please contact Kakadu Air for a quote. Kakadu Air also specialises in scenic flights and tourist work.

### **15.9 GUNBALANYA AIR CHARTERS**

Gunbalanya Air Charters offers air transport services including passenger transfers, scenic flights and freight haulage. Gunbalanya Air fly all over Arnhem Land and Darwin

### **15.10 NAUTILUS AVIATION**

Nautilus Aviation is a new operator in Jabiru offering helicopter services in Jabiru, Darwin and Gove. They are based at the Jabiru Airport.

# Tourist

## 16.1 KAKADU NATIONAL PARK

Jabiru is located within the World Heritage-listed Kakadu National Park. Kakadu is Australia's largest terrestrial national park, covering over 19,000 square kilometres. A number of different Aboriginal clans live in the park and evidence of their culture can be seen in many rock art galleries. Kakadu protects an amazing diversity of habitats including savannah woodlands, monsoon forests, stone country, floodplains and billabongs, tidal flats and coast. These are home to a wide range of wildlife, including many endemic species. Some areas of Kakadu are only open at certain times of the year due to seasonal conditions. Others are not open to the general public or require a permit for bushwalking and camping.

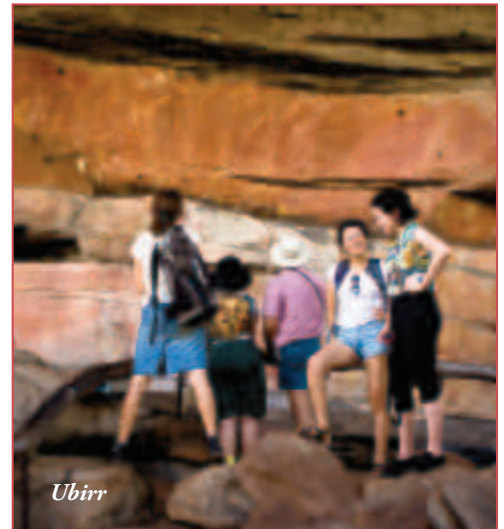
To plan your exploration of Kakadu, for maps, free to download park notes, apps, information and advice:

- Visit <http://www.parksaustralia.gov.au/kakadu/>
- Download Kakadu National Park's Visitor Guide at <http://www.parksaustralia.gov.au/kakadu/pub/visitor-guide.pdf>
- Visit Bowali Visitor Centre

## 16.2 BOWALI VISITOR CENTRE

Bowali Visitor Centre is Kakadu National Park's main visitor information complex. Designed in close collaboration with traditional owners and constructed from local materials, the centre blends in with the surrounding landscape. It offers wide, shaded verandahs and walkways, along with indoor air-conditioned spaces. Bowali staff can provide a range of information about Kakadu. The engaging interpretive display explains Kakadu's habitats, history and culture from both Bininj/Mungguy (local Aboriginal) and Balanda (non-Aboriginal) perspectives. The Bowali library has a range of material about Kakadu, including children's books, while the theatrette screens a range of free documentaries and films about Kakadu all day.

To get to the Bowali Visitor Centre from Jabiru (approx. 5km), take the Arnhem Highway towards Darwin, turn left onto the Kakadu Highway and follow the signs. There is also a 2km walking path through woodlands to the Bowali Visitor Centre from Jabiru. The track starts opposite the Crocodile Hotel and is marked with a sign. Allow 30 to 45 minutes each way and take plenty of water.



*Ubirr*

### **BOWALI VISITOR CENTRE**

**P:** (08) 8938 1120

### **OPENING HOURS**

Mon - Sun 8.00am - 5.00pm



*Bowali Visitor Centre*

**KAKADU TOURS AND TRAVEL**

**P:** (08) 8979 2548  
**F:** (08) 8979 2482  
**E:** karen@kakadutoursandtravel.com.au  
**W:** kakadutoursandtravel.com.au

**OPENING HOURS**

Mon - Fri 9.00am - 5.00pm  
 Sat - Sun CLOSED  
 Opening hours may reduce in wet season

**MERCURE KAKADU CROCODILE HOTEL**

**P:** (08) 8979 9000  
**F:** (08) 8979 9098  
**E:** hotel@crocodilehotel.com.au  
**W:** kakadutourism.com



**16.3 SCENIC FLIGHTS**

There are a number of aviation operators based at the Jabiru East air terminal. (These are listed in SECTION 15). Scenic flights in planes and helicopters are available all-year-round. Visit the Jabiru Airport Shop for flight enquiries.

**16.4 KAKADU TOURS AND TRAVEL**

Kakadu Tours and Travel is located in the Jabiru Town Plaza. Services provided are; Greyhound bus ticket bookings, Kakadu and Northern Territory tour bookings and general information on the Top End.

**16.5 MERCURE KAKADU CROCODILE HOTEL**

The Mercure Kakadu Crocodile Hotel is an attraction in itself, featuring 110 guest rooms, a pool, gift shop, dining room and bar. Aboriginal art is on display and can be purchased from the hotel.

It is important to book accommodation and to eat at the restaurant in advance particularly during the dry season. Tour bookings can be done at the hotel. The restaurant is open daily for breakfast, lunch and dinner (reservations essential). Takeaway food is also available from the restaurant. Ask staff to receive the Jabiru locals discount.

### 16.6 WARRADJAN CULTURAL CENTRE

Warradjan Cultural Centre houses a large interpretive display dedicated to sharing the culture, stories and history of Bininj/Mungguy (local Aboriginal people). The centre includes a gift shop which stocks a wide range of local Indigenous artworks and crafts, books and gifts. The circular design of the building represents a warradjan (pig-nosed turtle) and it, along with the display, was designed in close collaboration with Bininj/Mungguy. Warradjan Cultural Centre is located approximately 55km from Jabiru, adjacent to Coinda and Yellow Water. Admission is free.

### 16.7 COOINDA LODGE KAKADU

Cooinda Lodge offers an inviting shaded swimming pool, bistro-style dining, bars, petrol station and a store that offers locally-made crafts as well a wide range of essentials for touring.

There are a number of accommodation styles available including lodge rooms, outback retreats, villas and general powered and un-powered camp sites.

The Warradjan Aboriginal Cultural Centre is just five minutes from Coinda and many local attractions are within easy travelling distance.



AAA Charter

#### WARRADJAN CULTURAL CENTRE

**P:** (08) 8979 1500

**W:** <https://kakadutourism.com>

#### OPENING HOURS

Mon - Sun (wet season) 10.00am - 4.00pm

Mon - Sun (dry season) 9.00am - 5.00pm

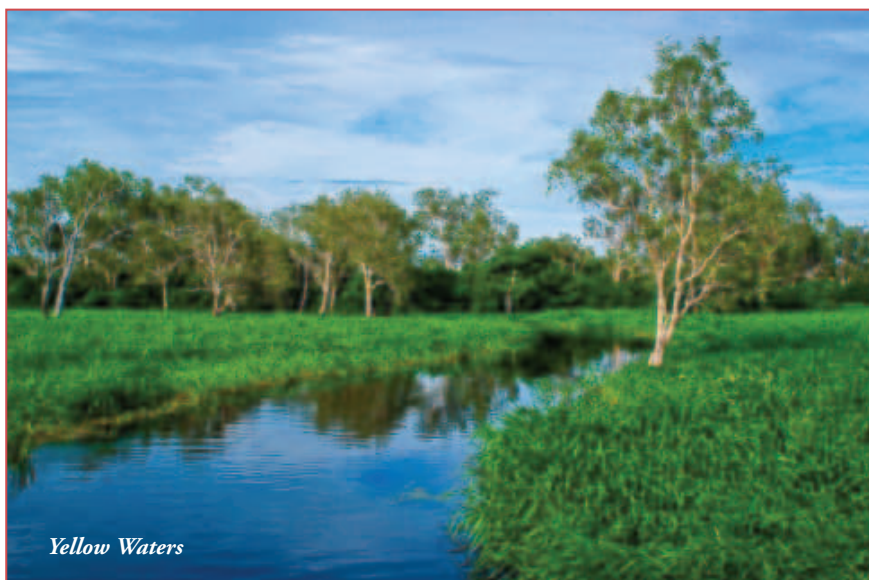
\*Hours may vary during seasons

#### COOINDA LODGE KAKADU

**P:** (08) 8979 1500

**W:** <https://kakadutourism.com>

**E:** [reservations@yellowwater.com.au](mailto:reservations@yellowwater.com.au)



Yellow Waters

# Volunteering

There are many opportunities to volunteer your skills and help build a strong, vibrant community in Jabiru.

## JABIRU FIRE STATION

Volunteer Fireies train every Monday at 6pm, learning skills such as dealing with bushfires, hazard abatement burns, road crash rescue, and basic firefighting training for the benefit of the Jabiru community. Jabiru Fire Station is a community-based fire station that welcomes all visitors, whether they are locals or tourists. Normal opening hours are 7.00am – 5.00pm Monday to Friday. Feel free to drop in for the best coffee in Jabiru. For more information telephone (08) 8979 2502

## KAKADU TRIATHLON

The Kakadu Triathlon is an annual, community-owned event organised and run in May each year by a committee. To get involved contact West Arnhem Regional Council on (08) 8979 9444.

## KAKADU NATIONAL PARK

Occasional volunteer opportunities come up within Kakadu National Park. For the latest information telephone Bowali Visitor Centre on (08) 8938 1120 or email [KakaduNationalPark@environment.gov.au](mailto:KakaduNationalPark@environment.gov.au)

## WEST ARNHEM REGIONAL COUNCIL

The Council hosts regular sporting, cultural, civic, charity and community events and is always open to taking community volunteers on board. For more information, check the latest edition of The Wire, drop in to the office in Jabiru Town Plaza, or telephone (08) 8979 9444.

## SPORTING CLUBS

Joining a sporting club such as the Jabiru Golf Club, the Jabiru Bombers Football Club or Army Cadets might mean helping out with sporting events, working bees and charity events, which are usually great social occasions. There are also informal sporting groups such as netball and PT. Check the Jabiru Noticeboard Facebook Page for details.

# Festivals AND EVENTS



*A Taste of Kakadu*



*Kurrung Sports Carnival*



*ANZAC Day Commemorations*



*Colour Fun Run*



*Kakadu Triathlon*



*Jabiru Community Children's Christmas Party*

To ensure a vibrant and dynamic community, Jabiru's businesses, community groups and clubs coordinate a range of festivals, events and activities for residents throughout the year.

Festivals, events and activities are held throughout the year. These include:

- Kakadu Triathlon
- Colour Fun Run
- Kakadu Bird Week
- Jabiru Biathlon
- Jabiru Creative Group
- National Reconciliation Week
- Jabiru Bombers home games
- A Taste of Kakadu
- NAIDOC Week celebrations
- Mahbilil Festival
- Kurrung Sports Carnival
- Mental Health Week
- Jabiru Fire Station Christmas Lolly Run
- Jabiru Community Children's Christmas Party
- Australia Day celebrations
- ANZAC Day commemorations
- Mayali Mulil

Dates for festivals, events and activities are advertised in the Wire, the Jabiru Noticeboard Facebook page, Council website and posted on community noticeboards located in the Jabiru Town Plaza and Jabiru Supermarket. A full calendar of events is also updated throughout the year.

# Government

## 19.1 WEST ARNHEM REGIONAL COUNCIL

West Arnhem Regional Council covers an area of almost 50,000 square kilometres across West Arnhem Land, encompassing five remote communities, including two islands and more than 100 homelands. Our communities are all uniquely different and are rich in natural landscapes scattered across salt and fresh water, stone country and within the World Heritage listed Kakadu National Park. Situated on Aboriginal-owned lands, the West Arnhem region is culturally important where art, language, ceremonies, customs, kinship and caring for country are fundamental parts of everyday life. It is also an environmentally significant part of the Northern Territory which attracts residents and tourists alike to Kakadu and Garig Gunak Barlu National Parks and deep into Arnhem Land.

### West Arnhem Regional Council incorporates:

Jabiru, situated in Kakadu National Park

Gunbalanya (Oenpelli)

Warruwi, South Goulburn Island

Minjilang, Croker Island

Maningrida

The population of West Arnhem Land is approximately 7000 people and more than two thirds of those residing in the region identify as Aboriginal and Torres Strait Islanders Peoples.

West Arnhem Regional Council has a large operational footprint providing local government services, including community well-being, corporate and core services to the communities. It is also one of the largest employers in the region, with approximately 210 staff. Through the 12 Elected Members, who represent Kakadu, Gunbalanya, Maningrida, Warruwi and Minjilang wards, Council plays a large role in advocacy and representation for the people residing in our communities.

West Arnhem Regional Council's main focus is building stronger communities - working in partnership with community towards providing meaningful employment and economic opportunities, delivering outstanding customer service and infrastructure. These include waste management, maintaining parks and gardens, and roads. As well as core services, the council delivers a range of community and commercial services.



## OUR VISION

‘Strong Communities. We achieve our goals together by walking in both worlds.’

## OUR PURPOSE

We work in partnership with community towards providing meaningful employment and economic opportunities, delivering outstanding customer service and infrastructure.

## OUR SERVICES

West Arnhem Regional Council is committed to providing local government services that improve employment opportunities, health and wellbeing of its residents and create opportunities for youth.

Providing a number of essential services is the core of our council. Many of these services relate to day-to-day activities in our towns and communities.

WARC also provides offers community care services in the region including aged care and disability services. The staff are able to assist with shopping, cultural activities, transport, personal care, domestic assistance and social support.

WARC also provides commercial services including childcare services, Commonwealth agency services (including Centrelink), Australia Post, aerodrome reporting services, Power and Water, retail services, and visitor accommodation services in some communities.

## WORK WITH US

WARC is one of the largest employers in the region with more than 209 employees and around 62% are Indigenous staff (as of 30 June 2024).

Our people are essential to maintaining a workplace culture that is dynamic, diverse and inclusive. At WARC we value differences, and create an environment where people can feel comfortable bringing their authentic selves to work.

With a strong emphasis on local employment, our Council is committed to providing apprenticeships, professional development and formal qualification opportunities for all of our employees.

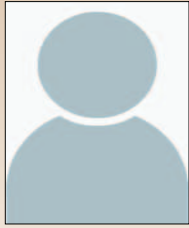
Check out our website: [www.westarnhem.nt.gov.au](http://www.westarnhem.nt.gov.au)

## COMMUNITY ENGAGEMENT

West Arnhem Regional Council’s vision is to build strong communities with the leadership, capacity and opportunities for improved employment, health and wellbeing.

WARC is committed to achieving this aim through directly engaging in partnerships within our communities. Our partnerships support civic and cultural events, arts and heritage, business and health initiatives, and provide youth, sport and recreational activities.





Minjilang Ward  
Cr Steven Nabalmarada



Warruwi Ward  
Cr James Marrawal



Maningrida Ward  
Mayor James Woods



Maningrida Ward  
Cr Jermaine Namanurki



Maningrida Ward  
Cr Monica Wilton



Maningrida Ward  
Cr Jacqueline Phillips



Gunbalanya Ward  
Cr Otto Dann



Gunbalanya Ward  
Cr Donna Nadjamerrek



Gunbalanya Ward  
Cr Tamar Nawirridj



Kakadu Ward  
Cr Ralph Blyth



Kakadu Ward  
Cr Mickitja Onus



Kakadu Ward  
Deputy Mayor  
Elizabeth Williams

## YOUR COUNCILLORS

If you would like to contact your councillor, call you nearest WARC office:

JABIRU: 08 8979 9444

GUNBALANYA: 08 8970 3700

MINJILANG: 08 8970 3500

WARRUWI: 08 8970 3600

MANINGRIDA: 08 8979 6600

**WEST ARNHEM**



# Closure AND REHABILITATION OF A FORMER ASSET

## 20.1 ABOUT ENERGY RESOURCES OF AUSTRALIA (ERA)

Energy Resources of Australia (ERA) operated the former Ranger uranium mine, Australia's longest continuous uranium mine surrounded by, but separate from, Kakadu National Park in the Northern Territory.

The former Ranger uranium mine lies within the 79 square kilometre Ranger Project Area, which is located eight kilometres east of Jabiru and 260 kilometres east of Darwin, in the Northern Territory of Australia. ERA ceased mining operations in 2012 and continued to process stockpiled ore until 8 January 2021, when the Ranger Authority required processing to cease. The sale of the last drum of uranium oxide was made in May 2022. The Ranger Project Area is now being progressively rehabilitated.

Under the Ranger Authority ERA must rehabilitate the Ranger Project Area to establish an environment similar to the adjacent areas of Kakadu National Park so that, in the opinion of the Minister with the advice of the Australian Government's Office of the Supervising Scientist Branch, the rehabilitated area could be incorporated into the Kakadu National Park, providing this aligns with the Mirarr Traditional Owners wishes.

In April 2024, ERA announced that it had appointed Rio Tinto to manage the Ranger Rehabilitation Project under a new Management Services Agreement (MSA). Under the MSA, Rio Tinto agreed to manage all aspects of the rehabilitation of Ranger, including project management and execution of all rehabilitation activities. Rio Tinto took responsibility for management of the Ranger site on ERA's behalf from 3 June 2024.

ERA will continue to directly manage its commitments in Jabiru, corporate and financial affairs, assets and governance, including the Jabiluka mineral lease renewal.

The ongoing rehabilitation activities on the Ranger Project Area are undertaken according to an authorisation granted under section 41 of the Atomic Energy Act 1953 (the Ranger Authority). Under the terms of the current Ranger Authority, ERA's rights to access, occupy and use the Ranger Project Area continue until 8 January 2026. This Act was amended in November 2022, with negotiations continuing for a new Ranger Authority that allows rehabilitation works to continue past 8 January 2026.



# Jabiru Masterplan

## 21.1 THE MASTERPLAN

After a 20-year Native Title claim, non-exclusive native title rights were determined to still exist in parts of the town of Jabiru.

Once the previous tenure between the Director of National Parks and the Jabiru Town Development Authority expired on 30 June 2021, the Granting of Jabiru to the Kakadu Aboriginal Land Trust, and a s19A Township Lease to the Mirarr, was a mechanism of recognising this native title.

On Saturday 26 June 2021, a ceremony in Jabiru was held to hand over the formal deed of grant of Jabiru to the Kakadu Aboriginal Land Trust, marking the return of Jabiru to the Mirarr Traditional Owners. The Township is now managed by Gundjehmi Aboriginal Corporation Jabiru Town (GACJT) through a s19A township lease. All land-related queries/approval requests should be directed to GACJT at [subleasing@gacjabiru.com.au](mailto:subleasing@gacjabiru.com.au) or by attending its office in the Regional Training Centre at 1 Van Delft St, Jabiru.

With the cessation of mining in the region and in recognition of the significant impact this will have on both the town and on Kakadu National Park,

the Mirarr now take their place in leading the future management and development of the town. The long-standing aspirations of the Mirarr people are set out in the Jabiru Masterplan. Download here: [A. Jabiru Masterplan \(2018 2021\).pdf](#)

The Jabiru Masterplan conceptualises the vision of the Mirarr Traditional Owners of Jabiru as “A world leading ecologically sustainable, economically and socially vibrant community where traditional Aboriginal culture, all people and the natural environment flourishes.”

The Australian and Northern Territory Government’s commitment to Jabiru and Kakadu National Park is reflected in the combined \$351.7 million of funding that was assured in 2019.

This funding is pivotal in achieving the objectives of the Jabiru Masterplan to make Jabiru an Aboriginal owned, sustainable national park tourism town that celebrates its cultural heritage and provides employment opportunities for Aboriginal people as well as encourage education and research in the region.

# Jabiru business directory

BUSINESS NAME	PO BOX	PHONE	FAX
Arnhem Land Program Association (ALPA)	GPO Box 3825, Darwin NT 0801	8944 6444	
Anbinik Kakadu Resort	PO Box 472 Jabiru NT 0886	8979 3144	8979 2176
Arnhem Total Building Maintenance	PO BOX 468, Jabiru NT 0886	8979 2314	
Aurora Kakadu Lodge (Jabiru)	PO Box 196 Jabiru NT 0886	8979 2422	8979 2254
Best Contracting	3 Hall Place, Jabiru NT 0886	0427 008 234	
Bininj Kunwok Regional Language Centre	Bininj Resource Centre	0429 427 685	
Blueridge Engineering	PO Box 70 Jabiru NT 0886	8979 2636	8979 2423
Border Store (East Alligator)	PO Box 664 Jabiru NT 0886	8979 2474	89792891
Bowali Visitor Centre	PO Box 71 Jabiru NT 0886	8938 1121	8938 1123
CatholicCare	PO Box 20 Jabiru NT 0886	8979 2266	8979 2400
Centrelink	PO Box 17 Jabiru NT 0886	8979 2011	8979 9488
CDR Drafting	PO Box 693 Jabiru NT 0886	0417890826	
Cham NT Cleaning Services	PO Box 668 Jabiru NT 0886	8979 3781 0407 726 475	8979 3781
Charles Darwin University	<i>Closed as of February 2021</i>		
Cooinda Lodge Kakadu	PO Box 696 Jabiru NT 0886	8979 1500	8979 0148
Deadly Cleaners	3 Tamarind Close, Jabiru NT 0886	0400 971 805	
Djabulukgu Aboriginal Association	PO Box 206 Jabiru NT 0886	8938 3200	8979 2248
Djigardaba Enterprise Aboriginal Corporation	Red Lily Outstation, Kakadu NT 0886	0428055885	
Djurrubu Rangers	5 Gregory Place, Jabiru NT 0886	8979 2200	
Energy Resources of Australia	Locked Bag 1, Jabiru NT 0886	8924 3500	08 8924 3555
Gundjeihmi Aboriginal Corporation	PO Box 245 Jabiru NT 0886	8979 2200	8979 2299
Gundjeihmi Aboriginal Corporation - Jabiru Town	1 Van Delft St, Jabiru NT 0886	7942 2136	
Jabiru Alberto Luglietti Memorial Pool	PO Box 721 Jabiru NT 0886	8979 9447	
Jabiru Area School	PO Box 246 Jabiru NT 0886	8938 3333	8938 3344
Jabiru Bombers Football (Bombers)	PO Box 572 Jabiru NT 0886	8979 9711	8979 2076
Jabiru Childcare Centre	PO Box 721 Jabiru NT 0886	0417 927 890	
Jabiru Fire Station		(08) 8995 5418	
Jabiru Golf Club	PO Box 619 Jabiru NT 0886	8979 2575	8979 2117
Jabiru Health Centre/Ambulance	PO Box 221 Jabiru NT 0886	(08) 8979 9900	
Jabiru Supermarket	PO Box 671 Jabiru NT 0886	8979 2077	8979 3020
Jabiru Property Services	PO Box 82 Jabiru NT 0886	8979 3203	

# Jabiru business directory

BUSINESS NAME	PO BOX	PHONE	FAX
Jabiru Public Library	PO Box 721 Jabiru NT 0886	8979 9460	8979 2571
Jabiru Post Office	PO Box 921 Jabiru NT 0886	8979 9817	
Kaddum Industries	PO Box 693 Jabiru NT 0886	0417 890 826	
Kakadu Air	PO Box 370 Darwin NT 0801	1800 089 113	8979 2303
Kakadu Contracting	PO Box 211 Jabiru NT 0886	8979 2229	8979 2963
Kakadu Fishing Tours	PO Box 195 Jabiru NT 0886	8979 2025	8979 2089
Kakadu Native Plants	PO Box 319 Jabiru NT 0886	0419 824 837	
Kakadu Billabong Safari Camp	Patonga, Kakadu NT 0822	0455 047 313	
Kakadu Tours and Travel	PO Box 26 Jabiru NT 0886	8979 2548	8979 2482
Katherine Aviation (Jabiru Base)	Kakadu Airport	89 711 277	
KML Cleaning Services	Darwin NT 0800	0427 52 3082	
Mercure Kakadu Crocodile Hotel	LMB 4 Jabiru NT 0886	8979 9000	8979 9098
Marrawuddi Arts & Culture	2 Gregory Pl, Jabiru NT 0886	8979 2777	
Nautilus Aviation	Kakadu Airport, Kakadu NT 0822	07 4034 9000	
Never Never Tours	3 Westcott Ct, Kakadu NT 0886	1800 638 376	
North Australian Helicopters (Jabiru Base)	PO Box 551 Jabiru NT 0886	8972 1666 8979 2444	8979 1676 8979 2272
Northern Land Council Jabiru	PO Box 18 Jabiru NT 0886	8938 3000	8979 2650
NTEX Pty Ltd	560 Girraween Rd, Girraween NT 0836	0428 136 075	
Office of the Supervising Scientist	LMB 2 Jabiru NT 0886	1800 803 772	
Parks Australia	PO Box 71 Jabiru NT 0886	8938 1100	8938 1115
Peter Keepence Photography	PO BOX 5 Jabiru NT 0886	0419 876 700	
Power and Water Corporation	PO Box 219 Jabiru NT 0886	1800 245 092	8979 2616
Red Lily Health Board Aboriginal Corporation	14 Flinders St, Jabiru NT 0886	(08) 8979 9900	
Warnbi Aboriginal Corporation	PO Box 270 Jabiru NT 0886	8979 3333	8979 3444
Warradjan Cultural Centre Coinda	PO Box 696 Jabiru NT 0886	8979 1500	8979 0148
West Arnhem Ground Maintenance	Jabiru NT 0886	0407 726 475	
West Arnhem Regional Council	PO Box 721 Jabiru NT 0886	8979 9444	8979 2488



# CYCLONE PREPAREDNESS & SAFETY PROCEDURES

## BEFORE THE CYCLONE SEASON

- Check with your local council to see if your home has been built to cyclone standards
- Check that the walls, roof and eaves of your home are secure
- Trim treetops and branches well clear of your home (get council permission)
- Preferably fit shutters, or at least metal screens to all glass areas
- Clear your property of loose material that could blow about and possibly cause injury or damage during extreme winds
- In case of storm surge/tide warning or other flooding, know your nearest safe high ground and the safest route to it
- Prepare an emergency kit containing
  - a portable battery radio, torch and spare batteries;
  - water containers, dried or canned food and a can opener;
  - matches, fuel lamp, portable stove, cooking gear, eating utensils; and
  - a first aid kit and manual, masking tape for windows and waterproof bag
- Keep a list of emergency phone numbers on display
- Check neighbours especially if recent arrivals, to make sure they are prepared

## EMERGENCY KIT CHECKLIST



**NOTE:** Managers of resorts, hotels, motels, and caravan parks should take steps to ensure visitors are aware of the dangers and know what to do in the event of a cyclone. Free protecting caravans pamphlets are available from your State/Territory Emergency Service.

The information in this checklist was prepared by Emergency Management Australia in consultation with State/Territory Emergency Services to help protect you and your property.

## CYCLONE THREAT

If Jabiru is under threat the siren will be activated at least two hours prior to the threat. The siren will sound for one minute then stop.

People will have to decide whether to remain in their homes, current location or evacuate to the community cyclone shelter.

### CYCLONE WATCH

#### WHEN A CYCLONE WATCH IS ISSUED

- Re-check your property for any loose material and tie down (or fill with water) all large, relatively light items such as boats and rubbish bins
- Fill vehicle fuel tanks. Check your emergency kit and fill water containers
- Ensure household members know which is the strongest part of the house and what to do in the event of a cyclone warning or evacuation
- Tune to your local radio/TV for further information and warnings
- Check the neighbours are aware of the situation and are preparing
- For weather information and updates go to [www.bom.gov.au](http://www.bom.gov.au)
- Check the Northern Territory Government's emergency information website SecureNT at <https://securent.nt.gov.au/>

### CYCLONE WATCH

#### WHEN A CYCLONE WARNING IS ISSUED

- Collect children from school or childcare centre and go home
- Park vehicles under solid shelter (hand brake on and in gear)
- Put wooden or plastic outdoor furniture in your pool or inside with other loose items
- Close shutters or board up or heavily tape all windows. Draw curtains and lock doors
- Pack an evacuation kit of warm clothes, essential medications, baby formula, nappies and important papers in waterproof bags to be taken with your emergency kit. Large/heavy valuables could be protected in a strong cupboard
- Remain indoors (with your pets). Stay tuned to your local radio/TV for further information
- Check the Northern Territory Government's emergency information website SecureNT at <https://securent.nt.gov.au/>

### EVACUATION

#### ON WARNING OF LOCAL EVACUATION

- Based on predicted wind speeds and storm surge heights, evacuation may be necessary
- Official advice will be given on local radio regarding safe routes and when to move
- Wear strong shoes (no thongs) and tough clothing for protection
- Lock doors, turn off power, gas and water, take your evacuation and emergency kits
- If evacuating inland (out of town) take pets and leave early to avoid heavy traffic, flooding and wind hazards
- If evacuating to a public shelter or higher location, follow police and State/Territory Emergency Services direction
- Leave pets protected with food and water



## WHEN THE CYCLONE STRIKES

- Disconnect all electrical appliances. Listen to your battery radio for updates
- Stay inside and shelter (well clear of windows) in the strongest part of the building i.e. internal hallway or bathroom. Keep evacuation and emergency kits with you
- If the building starts to break up, protect yourself with mattresses, rugs or blankets under a strong table or bench or hold onto a solid fixture, e.g. a water pipe
- Beware of the calm 'eye'. If the wind drops, don't assume the cyclone is over; violent winds will soon resume from another direction. Wait for the official 'all clear'
- If driving, stop (handbrake on and in gear) - but well away from the sea and clear of trees, power lines and streams. Stay in vehicle

## AFTER CYCLONE

- Don't go outside until officially advised it is safe
- Check for gas leaks. Don't use electric appliances if wet
- Listen to local radio for official warnings and advice
- If you have to evacuate, or did so earlier, don't return until advised. Use a recommended route and don't rush
- Beware of damaged power lines, bridges, building, trees, and don't enter flood waters
- Heed all warnings and don't go sightseeing. Check/help neighbours instead
- Don't make unnecessary telephone calls

## CYCLONE PREPAREDNESS AND CHECKLIST

- Find out whether your property could be affected by a storm tide and surge
- Have your emergency cyclone kit ready with such items as a portable radio with fresh spare batteries, torch, water containers, tinned food, tin opener, first aid kit and essential medicines, plastic bags, PLUS children's needs and important personal papers
- Decide beforehand where you will shelter, either at home, in an emergency shelter or with friends or relatives. Remember that pets are not allowed in most emergency shelters. Plan for your pets' safety
- Decide the route and how you will get to your shelter
- Don't leave your decisions until the last moment
- If you have your own transport, remember to have it fuelled and ready

Above all, heed advice broadcast by counter disaster authorities on when to take shelter

***In addition, all normal cyclone preparations should be made (e.g. house security, advising relatives or neighbours of your plans etc).***

## EMERGENCY CONTACT LIST



Record your emergency numbers in the list below, tear out this sheet and display it clearly in your home so that it is visible to all family members.

### Police, Fire, Ambulance and Emergency services

**000**

*(Emergency Call Centre will log the calls and refer to the correct response agency)*

State Emergency Services (SES)

Electricity provider

Local GP or doctor's surgery

Hospital

Veterinary practice

Interstate family contact

Local primary school

Local high school

Mum's workplace

Dad's workplace

Local council office

Neighbours



Neighbours

# JABIRU RESIDENTS' HANDBOOK

2025